

BAM | BOISE ART MUSEUM



Boise Art Museum Annual Report 2007 – 2008 (Fiscal Year 5/1/07 – 4/30/08)

View online at www.boiseartmuseum.org

670 Julia Davis Drive, Boise, Idaho 83702 • (208) 345-8330

MESSAGE FROM THE BOARD PRESIDENT



Dear Members,

Seventy-one years ago, the women and men of the Boise Gallery Association, visionary and civic-minded individuals and art lovers all, opened the bronze doors to the Boise Gallery of Art. Those doors, part of the original WPA building, still welcome all visitors to the Boise Art Museum as they pass through them to reach the galleries.

Those of us involved in BAM today stand on the shoulders of those early community pioneers to celebrate what artists, art lovers, museum professionals, good citizens, members, trustees, volunteers, docents, exhibit sponsors, and museum visitors have brought to fruition over these 71 years. We are already thinking about how to celebrate BAM's 75th anniversary! So many, many individuals have contributed to what BAM has become, and I am deeply grateful to all of them for this gift of the cultural jewel of our city, valley, state and region: our beloved Boise Art Museum.

The May 19, 2008, annual meeting was held as a "Celebration of the BAM Family," with a report on the continuity and change that the 2007-2008 fiscal year has brought, even though the life of the Museum doesn't stop and restart every May. BAM has embraced some big changes, but it has also preserved, continued and built upon the successes of the past. It has been an exciting time to be BAM's President – challenging, interesting, and lots of fun.

During this past year we appointed a new director, implemented a newly developed strategic plan, and reshaped some of the groups within the Museum. The Board of Trustees continues a multi-year process of revitalization, streamlining some of its operations and by-laws to more closely reflect the trustees' role and responsibility to the Museum and the progress of its long-term plan.

We invited a group of past BAM Presidents to meet at the Museum last fall. Twenty past presidents, whose service spanned from the 1960s to the present, were in attendance. Their collective memory and experience will be invaluable to BAM going forward.

This year BAM and the Beaux Arts Société began talks to integrate their two organizations under one umbrella to streamline BAM fundraising efforts. I am appreciative of the leadership of Beaux Arts Société Co-Presidents Tonia Ginkel and Heather Messenger-Schultz to accomplish the integration, which is complete at the time of this writing. This year the Beaux Arts Société raised \$32,000 for general operating support of BAM, \$16,000 to sponsor the Chuck Close exhibit, and \$13,500 for the Museum's *ArtReach* program. In 20-plus years this powerful group of volunteers has raised about one million dollars for the Boise Art Museum! We are indebted to them for their love of and dedication to BAM.

Exhibitions are at the core of all that the Museum does. A high point for the exhibitions program was the \$150,000 grant from the Paul G. Allen Family Foundation in support of a series of 4 installations over a period of three years. This is a significant grant, one given to only a few museums in the nation. It recognizes the excellence we achieve in exhibitions, and the relationship of trust BAM has built with the Foundation over many years. It is confirmation that we are on the right track with our exhibition program.

The portion of the BAM family responsible for these exhibitions includes several outstanding and long-term staff members who deserve special recognition: Sandy Harthorn, Curator of Art (since 1980), Catherine Rakow, Curatorial Assistant (since 1988), Ron Walker, Chief Preparator (since 1989) and Kathy Bettis, Registrar (since 1990). Joined by Associate Curator of Art Amy Pence-Brown in 2006, the BAM curatorial staff is a formidable artistic team who consistently stages the outstanding exhibitions and installations we have come to anticipate with excitement, and enjoy at BAM.

The permanent collection of art at BAM continues to grow exponentially. This year I would like to give special recognition to Gary Bettis, who has assembled an historic collection of prints and photographs that he has been gifting in groups to BAM annually. A highlight this year is the stunningly beautiful photograph by Hiroshi Sugimoto, *Ionian Sea—Santa Cesarea*, one of the single most valuable works in BAM's collection. Gary Bettis has built a focused and coherent collection which reflects his taste and the "eye" of an extraordinary collector. BAM is fortunate and honored to receive his collection. It will be a gift to our citizens for generations to come.

Education is BAM's primary mission, under the direction of Curator of Education Melanie Fales, who also spent the first two and half months of this fiscal year serving as Interim Director. One of the highlights of this year at BAM is the *ArtReach* program, an example of how BAM builds on its strengths. Melanie started *ArtReach* several years ago by visiting the schools of Melba, Idaho, and serving 100 students. This year *ArtReach* served about 5,000 children in over 100 schools outside of Ada County and within a 50-mile radius of BAM. This program was funded in part by a national grant from IMLS (The Institute of Museum and Library Services), Albertsons Boise Open, the Idaho Commission on the Arts, and by the *Fund-a-Need* auction at the 2007 Beaux Arts Wine Festival.

The Boise Art Museum continues to deal with multiple challenges. Both admission and membership income are in decline, and we are making plans to address those issues. Because of a relatively small endowment, we are continually seeking funding for exhibitions and programs in a community whose traditional corporate sources of arts funding are shifting. Increased storage and preparation areas are a pressing need at BAM. Staff salaries and the Museum's need for marketing services require urgent attention. All these will be challenging to resolve easily in the current economic climate.

Finally, I want to recognize those Trustees who are completing long and distinguished terms of service: Joel Hickman, Past President; Annette Elg, former Treasurer; and Bev Harad and Pam Parker. In addition, Kathy Carney, Docent representative; Tonia Ginkel and Heather Messenger-Schultz, 2007-08 Beaux Arts Société Co-Presidents; and Angela Wood, representing Friends of Art, completed one-year ex-officio terms on the BAM Board.

Amy McDevitt succeeds me as your next President. Your Museum is in excellent hands.

Driek Zirinsky

A handwritten signature in black ink that reads "Driek Zirinsky". The signature is written in a cursive, flowing style with a large loop at the end of the last name.

Board President 2007-08

Exhibitions & Installations

PRIMARY EXHIBITIONS

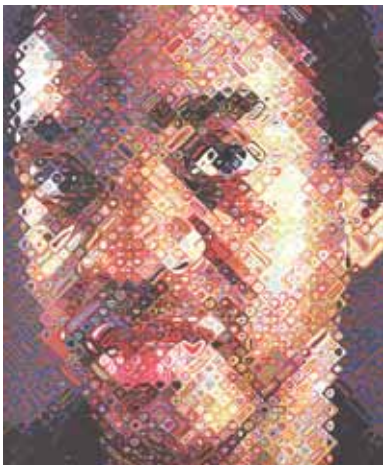
CHUCK CLOSE PRINTS PROCESS AND COLLABORATION

May 12 – August 12, 2007

For more than 30 years, artist Chuck Close has explored the art of printmaking in an investigation into the principles of perception. This exhibition provided a survey of the full extent of Close's long involvement with the varied forms and processes of printmaking, and was the first comprehensive exploration of his prodigious accomplishments in this field. Featuring works dating from 1972 to 2002, *Chuck Close Prints* highlighted the creative processes and technical collaboration between the artist and the master printers, demonstrating how Close has consistently challenged the accepted boundaries of the printmaking tradition. Taken together, these prints constituted a remarkable self-portrait of the creative drive, vision, and intellect of one of America's most important living artists.

Chuck Close Prints: Process and Collaboration was organized by Blaffer Gallery, the Art Museum of the University of Houston. The exhibition and publication were generously underwritten by the Neuberger Berman Foundation. The exhibition was made possible, in part, by major grants from the Lannan Foundation and Jon and Mary Shirley, and by generous grants from The Eleanor and Frank Freed Foundation and Houston Endowment, Inc. Financial support was also provided by Jonathan and Marita Fairbanks, Dorene and Frank Herzog, Andrew and Gretchen McFarland, Carey Shuart and the Wordtham Foundation, Inc., with additional funds from Karen and Eric Pulaski, Suzanne Slesin and Michael Steinberg, and Texas Commission on the Arts.

The exhibition was sponsored locally by the J.A. & Kathryn Albertson Foundation, Lemley International, OfficeMax Boise Community Fund, and URS Washington Division, with additional major funding support provided by the Beaux Arts Société, and media sponsorship provided by Boise Weekly.



Chuck Close
Lyle, 2002
149-color silkscreen
print, 25/80
Boise Art Museum
Collection, Collectors
Forum purchase

The Gift of Art Fundraiser

On May 18, 2007, more than 150 guests gathered at BAM to celebrate the Museum's 70th birthday and the opening of the Chuck Close exhibition. The program featured live entertainment and a presentation by Terrie Sultan, curator of the exhibition. Each guest was treated to a champagne dinner with birthday cake, and a limited edition print by Idaho artist Marje Weeks Wharry depicting BAM's original 1937 exterior.

Guests honored BAM's 70th year by generously contributing more than \$7,000 in birthday gifts. It is only through the generosity and support of our donors, patrons, members, volunteers, sponsors, trustees and staff that BAM has been able to serve the community with the highest quality exhibitions and programs over the past 70 years.

We would like to thank the following guests for their birthday contributions to BAM:

Geoff Beard and Guy Plahn	Lisa Laajala
Charmaine Brooks	Irv and Trudy Littman
Peter and Arlene Davidson	Brent and Carol Lloyd
Frances and Roy Ellsworth	Reilly and Amy McDevitt
Melanie Fales	Nick Miller and Cathy Silak
Vicki Gowler	Sheryl Scott
Bev and George Harad	Fred and Wendy Shoemaker
Kay Hardy and Gregory Kaslo	June W. Smith
Charles Herrington	Dave and Barbara Turner
and Ilene Shell	and CTA Architects
David and Mary Jane Hill	Anne Veigel and
Olivia Holly	Greg Patterson
Joy and Tom Kealy	Jim and Stephanie White
and Chicago Connection	Holly Sowles-Wilburn
Erin Kennedy	and Gary Wilburn

BAM also extends thanks to these donors who helped make our birthday event a truly memorable celebration:

3 Girls Catering	Hayden Beverage Company
Balance Dance Company	Ice is Nice
Boise Cold Storage	Integrity Audio Visual
Chef Bill Green's	Jenkins Photography
Catering Company	Kanak Attack Catering
Diamond Rental	KeyBank
Steve Eaton	Rebecca's Cakes and
Executive's Gourmet Catering	Catering
Hana...by Kimi	TableRock Catering

BRITTANY POWELL: MUCHO MÁS

June 16 – December 9, 2007

Portland-based artist Brittany Powell creates site-specific installations by covering entire rooms with contact paper and cutting away detailed designs with an X-ACTO® knife to recreate rooms from her experiences and memories of her everyday life, such as her bedroom, a convenience store or the local donut shop. Her work looks for the place where the mass-produced meets the personalized through the methods of inventorying, making of products, intentional kitsch, and performance. Each piece also

contains an element of humor. For the Boise Art Museum, Powell transformed the Nelson Gallery into a Mexican restaurant she called *Mucho Más*, which translates to "much more." Powell has an MFA in printmaking from the California College of the Arts, and was selected for the 2006 Oregon Biennial at the Portland Art Museum.

Sponsored by Wells Fargo Foundation



NOCTURNES

August 25 - October 21, 2007

Nocturnes explored the new technological processes which allow handmade artworks to become animated video. The exhibition featured four artists – Seattle's Cat Clifford and Mary Simpson, and New York-based Lucy Raven and Laleh Khorramian – who use film and editing technology to transform fine art prints, drawings and sculptural elements into animated films. Featuring projected works and related source material, the exhibition was designed to transport viewers into other worlds entirely of the artists' making. This exhibition was guest-curated by Fionn Meade, Assistant Curator for Public Programs at the Henry Art Gallery, University of Washington, in Seattle.

Sponsored in part by a grant from the Idaho Commission on the Arts



LAURA MCPHEE RIVER OF NO RETURN

August 25, 2007 – January 20, 2008

Acclaimed photographer Laura McPhee bases each of her photographic series on a dilemma. *River of No Return* highlighted the juxtaposition of individualism versus community, and development versus preservation in the American West. This powerful exhibition of haunting, large-scale color photographs captured conflicting ideas of land use and landscape across remote areas of Central Idaho. McPhee spent two years in the Sawtooth Mountains photographing these cinematic and picturesque landscapes and illustrating their coexistence with humanity and development. Laura McPhee is a professor at the Massachusetts College of Art in Boston.

This exhibition was organized by the Museum of Fine Arts, Boston and was made possible through the generosity of the Alturas Foundation.

The Boise Art Museum presentation was sponsored by Mr. and Mrs. Simplot and the J.R. Simplot Company

2007 IDAHO TRIENNIAL

September 1 – November 25, 2007

The Triennial is a juried art exhibition that celebrates the quality and diversity of artwork being created in the state of Idaho. This year's juror and curator was BAM's Associate Curator of Art, Amy Pence-Brown. In addition to the standard jurying of slides/digital images submitted by 249

artists, Pence-Brown spent the summer traveling across Idaho to conduct 71 studio visits, ultimately selecting the works of 25 artists for the exhibition.

By revamping this traditional favorite, BAM was able to put forward a statewide community presence through direct outreach and provide one-on-one constructive criticism to artists by viewing entire bodies of work. The 2007 Idaho Triennial was documented with a color catalog and toured to the Prichard Art Gallery in Moscow, Idaho, and to the Sun Valley Center for the Arts. The following artists were honored with exhibition prizes which were awarded by Idaho First Lady Lori Otter at a September 2007 reception.

Juror's Award (solo museum show at BAM and \$1,000 cash): **Gerri Saylor** of Moscow, ID

2nd Place prize (\$500): **BOCOLAB** - Francis Fox, Joseph Coffland, and Caleb Chung of Boise, ID

Honorable Mention (\$250)
Todd Volz of Moscow, ID

Honorable Mention (\$250)
Katarzyna Cepek of Boise, ID

The exhibition was sponsored in part by the Beaux Arts Société. The opening reception was sponsored in part by the Collectors Forum auxiliary of the Boise Art Museum.



LAS ARTES DE MEXICO

December 8, 2007 – February 24, 2008

Las Artes de Mexico, from the collection of the Gilcrease Museum, examined over 3,500 years of art and culture, from the ancient worlds of the Mayans and Aztecs to the 20th century works of Miguel Covarrubias and Diego Rivera. The exhibition included artifacts from over a dozen pre-Columbian cultures, art created after the European contact of the 1500s, traditional folk art, and the social commentary art that became a focus of Mexican art in the late 19th and early 20th centuries. The exhibition engaged the viewer in an exploration of past and present, celebrating three millennia of human experience in Mexico.

Courtesy of the Gilcrease Museum, Tulsa, Oklahoma

Tour Development by Smith Kramer Fine Art Services, Kansas City, Missouri

Sponsored locally by URS Washington Division, OfficeMax Boise Community Fund, and Bev and George Harad



Thanks in large part to the support of the Hispanic Business Association, the January 16, 2008, *Fiesta Recepción* at BAM was a great success! Over 400 guests enjoyed the evening's festivities, celebrating the *Las Artes de Mexico* exhibition. The reception included lively traditional music and dancing by several performers.

Our thanks go to all those who donated their time, talent, goods and support to this terrific event: DJ Eric Cabellos; Ken Cortez, President, Metalcraft; Fiesta Guadalajara and Modesto Vega; Norma Pintar; Ron Prado, Vice-President, KWEI Spanish Radio; and Spirit Distributing.

FAITH RINGGOLD: MAMA CAN SING, PAPA CAN BLOW

December 15, 2007 – March 23, 2008

Internationally known artist, writer and educator Faith Ringgold's paintings, drawings, prints, story quilts, and soft sculpture were highlighted in this exhibition. Ringgold began making story quilts in the 1980s, combining storytelling and quilt making with genre painting. Through her brightly colored imagery and mixed media art, she has examined a broad range of social and political issues. Ringgold has written and illustrated many children's books, including "Tar Beach," which has won more than 30 awards, including the Caldecott Honor and the Coretta Scott King award. This exhibit, toured by ACA Galleries in New York City, featured 40 mixed-media works spanning four decades of Ringgold's career, from 1964 to 2004.

Sponsored in part by OfficeMax Boise Community Fund, and the Friends of Faith Ringgold

OfficeMax
Boise Community Fund

The Friends of Faith Ringgold are: Meridith Allis, Marilyn Beck, Hollis Brookover, Gerry Crusier, Arlene Davidson, Frances Ellsworth, Clark Fidler, Sydney Fidler, Dottie Goldman, Kay Hardy/Idaho Women's Charitable Foundation, Heather Jauregui, Bob and Sondra Kantor, Jeanne King, Pam Lemley, Gayla C. Lyon, Jo Anne Minnick, Esther Oppenheimer, Skip Oppenheimer, Sue Sanor, Linda Swanson, Mikel Ward, Angela Wood, Driek Zirinsky, and Michael Zirinsky.



Faith Ringgold, *Jazz Stories 2004: Mama Can Sing, Papa Can Blow #6: I'm Leavin in the Mornin, 2004*
Acrylic on canvas with pieced border, 82 x 65"
Courtesy of ACA Galleries New York, NY

JOHN TAYLOR: SUBMERGE

December 22, 2007 - May 25, 2008

Self-trained California artist John Taylor grew up near the ocean and from childhood was steeped in boating and shipping lore. After setting up practice as a landscape architect, Taylor returned to his childhood fascination with the sea and began to create sculptures of sunken and damaged ships. Made of weathered wood and metal, and a host of other components such as old earrings, computer motherboards, wire coat hangers and parts from worn out children's toys, each of Taylor's boats is his personal (albeit researched) version of an actual vessel long forgotten in American history. The title of the exhibition, *Submerge*, reflects on these ships' demise at sea, their past as wreckage, and their reclamation from history by the artist. *Submerge* featured 21 ships created between 2000 and 2007, as well as sculptures examining other aspects of maritime lore and culture.

Sponsored in part by Arlene and Peter Davidson

MARSDEN HARTLEY AMERICAN MODERN

March 15 – June 22, 2008

Marsden Hartley: American Modern examined this renowned artist through the largest collection of his work, the Hudson and Lone Walker Bequest at the University of Minnesota's Frederick R. Weisman Art Museum. As Hartley's last dealer and important patron, Hudson Walker amassed a rich collection that spans the artist's career. Hartley (1877–1943) was an American avant-garde artist who was involved in pivotal art events of the 20th century. His work was shown by Alfred Stieglitz at the groundbreaking 291 Gallery in 1909, and then at the famed Armory show of 1913. In the 1920s, he painted in Taos and Santa Fe, depicting the American Southwest at a time when the great luminaries of Southwest painting were drawn to New Mexico. Today Hartley is recognized as a 20th-century American Master.

Marsden Hartley: American Modern was organized by the Frederick R. Weisman Art Museum at the University of Minnesota, Minneapolis. This exhibition was made possible by the generous bequest of Hudson and Lone Walker, whose gift comprises the Frederick R. Weisman Art Museum's collection of works by Marsden Hartley.

Sponsored locally in part by Wells Fargo, the J.A. & Kathryn Albertson Foundation, and an anonymous donor, with media sponsorship by Idaho Media Corporation

J.A. & KATHRYN
ALBERTSON
FOUNDATION

WELLS
FARGO

IMC
PUBLISHING

ANDREA MERRELL: MEASURE OF MAN

April 5 – June 22, 2008

Idaho artist Andrea Merrell has worked for two decades creating drawings, sculpture and mixed-media works based on geometry and mathematical formulas such as the Golden Mean and the Fibonacci sequence. More recently, her work has also incorporated a study of the paintings of 14th-century Italian Renaissance artist Giotto. In studies of color value, geometric form, abstraction, and art history, Merrell developed an installation of relationships and juxtapositions for *Measure of Man*, the artist's first solo museum exhibition.

Supported in part by Charley and Jacque Crist, and by the Friends of Andrea Merrell.

The Friends of Andrea Merrell are: J Crist Gallery, Chris Binion, Catherine Brigden, Deborah Hardee, Kay Hardy, Mary Ann Martini, Neil Martini, Mat Slater, Andrea Sparrow, Ann Percy Stroud, Robert Vasquez, Joe Wheat, and Driek Zirinsky.



Marsden Hartley, *One Portrait of One Woman*, 1916
Oil on composition board, Bequest of Hudson D. Walker
from the lone and Hudson D. Walker Collection
Weisman Art Museum, University of Minnesota, Minneapolis

PERMANENT COLLECTION EXHIBITIONS

ELEGANCE OF FORM

Ongoing

Elegance of Form presents works of art in a variety of media that share an emphasis on beauty and harmony. Examples of American ceramic studio art from the 20th century are on display along with American and Northwest paintings and works on paper. Included are fine examples of ceramic works by Rudy Autio, Paul Soldner, and Jun Kaneko, as well as two-dimensional works by James Lavadour, Robert Motherwell and Pat Steir. The work of John Takehara, Boise ceramist and former professor of ceramics at Boise State University, is represented, as are numerous works from his private collection, gifted to BAM during the 1990s.

BOISE: A LOOK BACK

April 26 - October 24, 2007

This exhibition featured 15 paintings and photographs of locations in Boise. This selection of work was presented on the occasion of BAM's 70th birthday and the 100th birthday of Julia Davis Park.

H₂O

December 22, 2007 – October 31, 2008

H₂O featured artworks from the permanent collection depicting water in various forms, from rain to ice and oceans to rivers. The show highlighted selected recent gifts to the permanent collection as well, and complemented the John Taylor exhibition on seafaring and maritime culture. A 2008 Collectors Forum purchase by photographer Todd Hido, *Untitled #6097 (Palouse Series)*, as well as a wonderful gift from Gary Bettis, the Hiroshi Sugimoto photo *Ionian Sea – Santa Cesarea*, both suited the exhibition's theme and were hung as soon as they were accessioned into the Museum's permanent collection.

GO FIGURE

February 16, 2008 – ongoing

Collectors Forum is a BAM membership group whose mission is to assist in the acquisition of Northwest art for the Museum's Permanent Collection. The artworks in *Go Figure* are drawn from Collectors Forum purchases as well as recent gifts of art from private collectors. The works purchased by Collectors Forum over the past 16 years have added comprehensiveness and depth to the Museum's Northwest collection, stimulated interest in it, and have hence been catalysts for many other gifts of art. *Go Figure* features an eclectic collection of paintings, drawings, sculpture and photographs that focus on the variety of ways in which the figure can be interpreted. These artworks are contemporary in outlook and non-traditional in format, scale and approach.

During fiscal year 2007-08, more than 22,961 people from across the state participated in BAM-organized educational programs. In support of the Museum's mission, BAM's education programs provide visitors with opportunities for meaningful experiences with original works of art. Programs complement and extend the learning that takes place naturally in the galleries, advancing art as an integral component of personal expression and the human learning experience.

Boise Art Museum strives to make art accessible to the public through direct interaction with students both in and out of the Museum, through teacher training, tours, classes, lectures, online programs and publications. Innovative projects and partnerships are designed to encourage public participation and engagement in BAM's educational activities and exhibitions.

In fiscal year 2007-08, BAM's education programs were supported in part through grants and sponsorships from the *Albertson's Boise Open*, *Beaux Arts Société*, *Boise State University Department of Literacy*, *Boise State University Visual Arts Department*, *Da Vinci Art Guild*, *Charles and Victoria Feast*, *Docent Grant Fund*, *Hackborn Foundation*, *Greater Boise Rotary Foundation*, *Harry W. Morrison Foundation*, *Idaho Black History Museum*, *Idaho Commission on the Arts*, *Idaho Power*, *Idaho Women's Charitable Foundation Members' Philanthropic Gift Fund*, *Institute of Museum and Library Services*, *Lee Pesky Learning Center*, *Lutheran Good Samaritan Society*, *National Art Education Foundation*, *Parks Royal Body Works*, *Sara Maas Fund in the Idaho Community Foundation*, *Target*, and *US Bancorp Foundation*.

EDUCATION INITIATIVES

ArtReach Program Expansion

Boise Art Museum's ArtReach program was the recipient of several grants to continue and significantly expand the program into the future. BAM received grants from *Albertson's Boise Open*, the *Beaux Arts Société* and the *Idaho Commission on the Arts* for the project. In addition, Boise Art Museum received a three-year national grant award from the Institute of Museum and Library Services (IMLS) to support and expand the ArtReach program, which provides hands-on art education experiences to students in underserved rural schools. Museum-trained ArtReach educators travel to rural classrooms and engage students in a 45-minute discussion of artwork from BAM's Permanent Collection, using a projector and laptop computer to present digital images of original works of art. The inquiry-based lesson is

followed by a 45-minute hands-on project related to the artwork. At the end of the visit, each student receives a pass for the student and two guests to visit BAM for free. In addition to discussing and creating artwork, students learn about BAM and its purpose in the community. At the same time, teachers learn how to integrate the arts into their regular curricula. In a primarily rural state that does not provide art teachers in many public schools, *ArtReach* fulfills an important need by providing thousands of underserved Idaho students and teachers with hands-on art education experiences. Piloted in 2001 for 100 students in Melba, Idaho, the *ArtReach* program increased this year to serving 5,079 students, thanks to the grants mentioned. The grant from IMLS will enable BAM to create new *ArtReach* lessons, hire and train instructors, and purchase art materials, expanding the program to serve 7,800 students each year by the end of the three-year grant. The IMLS award is one of the largest grants BAM has received in support of an education program. *ArtReach* is provided free of charge for pre-K-12 classes within a 50-mile radius of BAM and outside of urban Ada County. More than 10,000 urban Ada County students annually visit BAM as part of the Museum's successful Free School Tour Program.

Faith Ringgold Partnership

In conjunction with the exhibition *Faith Ringgold: Mama Can Sing, Papa Can Blow*, internationally known African-American artist, writer and educator Faith Ringgold presented a special program on March 6, 2008, entitled *Faith Ringgold: Story Quilts and Children's Books*. The program, held at the Egyptian Theatre, was attended by 325 people, and was followed by a book signing at the Boise Art Museum. As an



Faith Ringgold at BAM book signing
Photo Credit: Julian Jenkins/www.jenkins.photo.com

unexpected result of this educational program, artists Faith Ringgold and Curlee Holton facilitated a donation to BAM of a print portfolio with artwork by eleven important African-American artists.

This program was supported in part by a grant from the Sara Maas Fund in the Idaho Community Foundation and co-sponsors Boise State University Department of Literacy, Boise State University Visual Arts Department, Lee Pesky Learning Center and the Idaho Black History Museum.

Head Start Project

BAM's Curator of Education consulted on a project for *Head Start and Early Head Start* in which four and five-year-old children at The Lolly Wyatt Center in Garden City worked with artist and educator Anne Cirillo to create large-scale banners for the *Idaho Botanical Garden's Children's Adventure Garden*. This project provided young children with the opportunity to voice their ideas and understanding through a visual means with a lasting impact in the community. The project was funded in part by a grant from the *Idaho Commission on the Arts*.

Free School Tour Program

During the fiscal year 2007-08, BAM implemented engaging, interactive school tours followed by hands-on workshops based on the following four themes and exhibitions:

Idaho Art

Las Artes de Mexico

*Faith Ringgold and John Taylor:
Rebuilding Memories*

Marsden Hartley

BAM served more than 15,000 students and teachers through its free school tour program, teacher institutes, outreach and school-centered partnership programs.

Studio Art Program

Designed for children and adults, BAM's Studio Art Program encourages the creative abilities of all participants by providing experiences in a variety of arts media. All directly relating to BAM's exhibitions, classes ranged from children's classes and camps focused on printmaking, paper making, painting, mixed media portraiture, clay, sculpture, and illustration to



Patrons of all ages enjoy making art in the BAM Studios

found object sculpture, illustrated stories and landscape painting workshops for adults. BAM offered 23 classes serving 238 students.

Public Programs

BAM provided an enriching array of public programs and tours for the community. The Museum offered the following programs with a cumulative attendance of more than 7,000 people. The regular monthly programs invite return visitation and build consistent audiences. They also encourage newcomers to the Museum each year.

Regular Monthly Programs

BAM hosted a full menu of regular monthly programs serving all age levels, including *Art Breaks*, *ART TALK, Especially for Seniors*, *Family Art Saturday*, *First Sunday Art Tours*, *Toddler Wednesday*, and *Studio Art Exploration*. The schedule was augmented with printmaking demonstrations during the *Chuck Close* exhibition.

Lectures

BAM featured the following Art Talks and lectures:

May 1, 2007

Boise Art Museum's Associate Curator of Art, **Amy Pence-Brown**, led visitors on a walking tour of the Museum's outdoor sculpture collection (see photo).



May 17, 2007

Artist **Kendall Buster** spoke about her installation in BAM's Sculpture Court.

May 18, 2007

Terrie Sultan, Director of the Art Museum of the University of Houston, and curator of the exhibition *Chuck Close Prints: Process and Collaboration*, talked about the artist and the exhibition during *The Gift of Art Celebration* honoring BAM's 70th birthday and the Chuck Close exhibition opening.

June 7, 2007

Artist **Brittany Powell** worked on her room-size installation using contact paper and answered visitors' questions as she created her artwork.

August 2, 2007

Bill Hall, Master Printer and Studio Director for Pace Editions, New York, discussed the printmaking processes used in the exhibition *Chuck Close Prints: Process and Collaboration*.

August 29, 2007

Artist **Laura McPhee** addressed employees from the Simplot Company, sponsor of her exhibition *River of No Return*, during their event at BAM.

October 4, 2007

Artist **Cat Clifford**, one of the four artists in the *Nocturnes* exhibition, talked about her work.

December 6, 2007

Boise Art Museum's Associate Curator of Art, **Amy Pence-Brown**, discussed the exhibition *Laura McPhee: River of No Return*.

January 3, 2008

Anne Morand, curator of the exhibition and C.E.O. of the C.M. Russell Museum, discussed *Las Artes de Mexico*.

February 7, 2008

Artist **John Taylor** shared information about his exhibition *Submerge*.

March 6, 2008

Artist and writer **Faith Ringgold** spoke about her artwork, the award-winning children's books she has written and illustrated, and her personal journey as a woman and an artist.

April 3, 2008

Randall R. Griffey, Ph.D., Associate Curator of American Art at the Nelson-Atkins Museum of Art, discussed the *Marsden Hartley: American Modern* exhibition.

Partnerships

During fiscal year 2007-08, BAM partnered with more than 30 institutions, ranging from area schools, universities and state organizations to libraries, arts groups, and dance companies, to create meaningful programs. Some of the partners included *Balance Dance Company*, *Boise City Arts Commission*, *Boise State University*, *The Cultural Network*, *Discovery Center of Idaho*, *Idaho Black History Museum*, *Idaho Botanical Garden*, *Idaho State Historical Museum*, *The Cabin*, *MK Nature Center*, *Osher Lifelong Learning Institute*, *Red Circle Press* and *Zoo Boise*.

ArtScene Partnership Cultural District Block Party

Boise Art Museum collaborated with other local cultural organizations in the ARTScene cultural district block party on May 3, 2007. Visitors enjoyed a special dance performance by

Balance Dance Company among the sculptures in the exhibition *Kendall Buster: New Growth*, as well as the Art Talk and Studio Art Exploration programs regularly offered by BAM on First Thursdays. Cultural Partners for ARTScene were *Anser Charter School*, *Balance Dance Company*, *Ballet Idaho*, *Boise City Arts Commission*, *Boise Contemporary Theater*, *Boise Philharmonic*, *Boise Public Library*, *Boise Tour Train*, *Children's Dance Institute*, *DROP Dance Collective*, *Foothills School of Arts and Sciences*, *Forte Pilates Studio*, *Idaho State Historical Museum*, *Shakespeare Festival Education Outreach*, *The Cabin*, and *Zoo Boise*.

Free Admission for BSU Students

BAM expanded its partnership with Boise State University to provide local college students, faculty and staff with opportunities to experience world-class visual art exhibitions and educational programs free of charge for an entire year. From August 21, 2007, through August 21, 2008, all full-time BSU students, faculty and staff with valid identification cards received free admission to the Boise Art Museum. This partnership expanded on a pilot program initiated in 2005 which allowed BSU students to visit BAM for free during the 2005-06 academic year. The 2007-08 partnership was extended to include free admission for faculty and staff for an entire year. In addition, BAM participated in the University's inaugural *Family Day* by offering half-price admission to families of BSU students on February 2, 2008, in conjunction with BSU's student and family orientation weekend. This partnership serves as a successful model of two educational institutions working together to better serve students and the community.

Julia Davis Park Centennial Celebration

Boise Art Museum participated as a partner in the Julia Davis Park celebration by offering reduced admission and free copies of the BAM art catalog *100 Years of Idaho Art* to visitors celebrating the park's 100th anniversary on Saturday, June 23, 2007.



Participants in BAM's Teacher Education Program explore Brittany Powell's installation

Education Volunteers

Docents

Docents are one of the cornerstones of BAM's successful *School Tour Program*. During the 2007 - 08 academic year, BAM Docents provided more than 5,000 hours of service educating Idaho students and making connections between the artwork and the students' lives. In addition to conducting exhibition tours and facilitating related hands-on studio activities for school classes, docents guided public tours for *Art Breaks*, *First Sunday Art Tours*, and *Especially for Seniors*. Docents also traveled to San Francisco to learn about Marsden Hartley, Diego Rivera and other artists. We welcomed nine new docents into the docent corps in January this year.



Docent Jean Baker with students

2007 – 08 Docent Corps Members

Marti Agler	Pat Machacek
Jackie Ayers	Lyndon Marquez
Jean Baker	Brock Martinson
Sue Barkis	Adelaide Mast
Nancy Bondurant	Barry Moore
Kathy Carney	Bob Olson
Barbara Chatten	Esther Oppenheimer
Helen Copple-Williamson	Mary Lou Orndorff
Joan Cox	Bonnie Peacher
Luanne Crump*	Carolyn Perkins Duvall
Gerry Cruser	Lody Reeves
Roz Cusack	Sally Richards
Wendy Davenport	Ana Maria Schachtell
Janet Dickey	Katherine Schroeder
Nancy Ellenberger	Lois Shaw
Helga Fast	Carroll Sims
Tere Foley	Christin Steele
Tim Gleason	Jan Stewart
Sue Claire Hebert	Aletha Sullivan
Linda Hendricks	Ronna Sundell
Nancy Jacobs	Joyce Taylor
Renée Johnson	Larry Tierney
Suzanne Pollock Knibbe	Stephen Washburn
Mary Ann Kriss	Linda Woehl
Danielle Krouth	Rita Wood
Besse LaBudde	
Gayla C. Lyon	* Now Deceased

Internship Program

Education Department Interns complete a semester or year-long project designed to meet their education and career goals while sharing their educational and technical expertise to further the educational mission of the Museum.

2007-08 Education Interns

Kim Cochrane (Boise State University)
Karelia Dubowski (Boise State University)
Amanda Israel (University of North Carolina, Asheville, NC)
Jen Nichols (College of Idaho)
Leslie Peterson (North Park University, Chicago)
Casey Pound (Boise State University)

Teen Volunteers

Teen volunteers (14-19 years of age) assist the Education Department with preparation of materials for studio classes and serve as teaching assistants. Through our program, these students, who often aspire to careers in education and/or art, benefit from authentic classroom experiences and fulfill their community service requirements for school while learning more about art at BAM.

2007-08 Teen Education Volunteers

Sarah Bianchi	Deidre Nelms
Jared Elliott	Brooke Nayden
Chelsey Mandell	Mariel Rollins
Katie McConnell	Rachel Stivers
Kate McNearney	Emilee Wagner
Jenaya McKellip-Fowler	Luisa Weitensteiner

Boise State University Student Volunteers

In partnership with the Boise State University Art Education Department, student volunteers assist BAM's Education Department with regular monthly programs and studio classes to fulfill their observation requirements to become certified teachers.

2007-08 BSU Student Volunteers

Sarah Bianchi
Jamie Tock

Technology Intern

Jordan Kasper, a senior at Meridian Technical Charter High School, spent several months at BAM using his training to provide support to the Museum's website. BAM's ongoing partnership with Meridian Technical Charter High School has proven fruitful for both organizations, providing students with the worksite experience important to their future success while offering BAM the skills and time required to maintain an engaging and effective website.

Financial Overview

STATEMENT of FINANCIAL POSITION

April 30, 2008

ASSETS

Cash and cash equivalents	\$ 414,045
Investments	1,821,900
Interest and accounts receivable	10,482
Grants and pledges receivable	155,019
Prepaid expenses	28,168
Prepaid exhibits	12,603
Merchandise inventory	31,788
Furniture and fixtures, net of accumulated depreciation of \$290,532 and \$274,119, respectively	93,749
Art collection not capitalized	

TOTAL ASSETS **\$2,567,754**

LIABILITIES and NET ASSETS

LIABILITIES

Accounts payable and accrued expenses	\$ 117,385
Deferred revenue	125,609

TOTAL LIABILITIES **\$242,994**

NET ASSETS

Unrestricted	\$1,231,649
Temporarily restricted	88,111
Permanently restricted	1,005,000

TOTAL NET ASSETS **\$2,324,760**

TOTAL LIABILITIES and NET ASSETS **\$2,567,754**

CONDENSED STATEMENT of ACTIVITIES

Year ended April 30, 2008

TOTAL SUPPORT and REVENUES **\$2,251,216**

EXPENSES

Supporting services	\$878,353
Program services	1,501,771

TOTAL EXPENSES **\$2,380,124**

CHANGE in NET ASSETS before OTHER ITEMS **\$(128,908)**

CHANGE in UNREALIZED GAIN on INVESTMENTS **(32,072)**

COLLECTION ITEMS PURCHASED

but NOT CAPITALIZED **(41,300)**

CHANGE in NET ASSETS **(202,280)**

NET ASSETS at BEGINNING of YEAR **\$2,527,040**

NET ASSETS at END of YEAR **\$2,324,760**

The above condensed statement of activities reflects information taken from the Museum's financial statements audited by Eide Bailly LLP, of Boise, Idaho.

THE PAUL G. ALLEN FAMILY *foundation*

Boise Art Museum announced in March 2008 that it received notification of a \$150,000 grant award from the **Paul G. Allen Family Foundation** in Seattle, WA. This is BAM's largest single grant from a foundation. The Paul G. Allen Family Foundation has been generous to BAM in the past, but the size and scope of this gift far surpasses their previous contributions. These grants are extremely competitive and this award enhances BAM's profile in the Northwest visual arts community.

The original grant request proposed a new four-exhibition series entitled *Threads of Perception*, featuring artists who are internationally recognized for their innovative use of artistic media and their exploration of issues related to human perception.



Lead Pencil Studio, Annie Han + Daniel Mihalyo: After BAM Sculpture Garden installation, 2008, the initial exhibition project in the *Threads of Perception* series
Photo courtesy of the artists

ART IN THE PARK

Boise Art Museum hosted the 53rd annual *ART in the PARK*, September 7 – 9, 2007, and, for the first time, offered FREE admission to the Museum for this weekend event. The largest event of its kind in the Northwest, *Art in the Park* featured over 250 artists offering various art media, from fused glass and metalwork, to pottery and textiles, to jewelry and toys.

Held outdoors in beautiful Julia Davis Park, *Art in the Park* also featured concessions, free live entertainment, and free children's art activities hosted by the Beaux Arts Société. Raffles for items like a motorized "Buddy" scooter, round-trip tickets on Southwest Airlines, and season passes at Bogus Basin Mountain Recreation Area added to the fun.

We thank our *Art in the Park* 2007 Sponsors:

Boise Weekly, St. Luke's, Dawson Taylor Coffee Roasters, KTVB Idaho's NewsChannel 7, Qwest, GEICO, Jimmy Dean, Trendwest Resorts, Bogus Basin Mountain Recreation Area, Beaux Arts Société, Bigbird Graphics, City of Boise, Allied Waste, Sprint, and Southwest Airlines

Art in the Park is an annual event presented by Boise Art Museum. Proceeds benefit programming and operations and enable us to further our mission of championing excellence in the visual arts.

"ART"

In April 2008, the Museum hosted, in collaboration with Boise State's Theater Arts Department, a successful run of 'ART,' a Tony Award-winning play by Yasmina Reza, translated by Christopher Hampton, and directed by Lynn Allison Hofflund. Ten performances took place over 2 weeks in a BAM gallery transformed into an intimate theatre setting. The play touches on the question "What is art?" while also examining the art of friendship. Local professionals Richard Klautsch, Phil Atkinson, and Gordon Reinhart portrayed three friends faced with a "white on white" abstract painting. Special thanks go to our generous anonymous underwriter; and to Driek Zirinsky, BAM Board President and art collector, and Karen Bubb, Interim Executive Director, Boise City Arts Commission, who lent their expertise by facilitating an engaging post-show discussion.



Visitors enjoy *Art in the Park*
Photo Credit: Julian Jenkins/www.jenkins.photo.com



Alex Hunt, winner of our *Art in the Park* scooter raffle, poses with her new "Buddy"



The "Art" actors in rehearsal
Photo by Lynn Hofflund

Volunteer Support



Role & Mission

The Beaux Arts Société (BAS) is a volunteer member group which raises funds to financially support Boise Art Museum's exhibitions, general operating and administrative expenses, and educational experiences. These volunteers conduct a signature fundraising event, the Beaux Arts Wine Festival, which has become an established feature of our community's philanthropic calendar. Through this financial support, BAM is able to fulfill its mission of championing excellence in the visual arts through exhibitions, collections, and educational experiences. Moreover, through its fundraising events, BAS encourages participation in the cultural opportunities offered through membership in BAM. The Beaux Arts Société welcomes as members all those interested in perpetuating the visual arts within the community.

In 2007 - 08, the Beaux Arts Société was a major sponsor of both the *Chuck Close Prints: Process and Collaboration* exhibition and the *2007 Idaho Triennial*, which celebrated quality art being created all across our great state.

The Beaux Arts Société is also a proud sponsor of BAM's *ArtReach* program, having raised supporting funds through the *Fund-a-Need* auction at the 2007 Wine Festival.

2007-08 Beaux Arts Société Board Members

Yvonna Rowett, *Beaux Arts Société Coordinator*
Tonia Ginkel, *Co-President*
Heather Messenger-Schultz, *Co-President*
Lisa Kiser, *President-Elect*
Jennifer Johnson, *Past President*
Jan Williams, *Secretary*
Robin Cook, *Treasurer*
Donna Bari, *Social*
Susan Platt, *Media Relations & Fund Development*
Susie MacKinnon, *Assistant Media Relations & Fund Development*
Cynthia Thornton, *Membership*
Lisa Bosworth, *Volunteer Coordinator*
Andrea Thornton Rothstein, *Nominations*
Santee Hall, *Education*
Liz Questad, *Member-at-Large*
Childrens' Art Festival
Zona O'Neal, *Chair*
Mary Ann Artis, *Assistant Chair*
Santee Hall
Wine Festival
Jennifer Johnson, *Chair*
Sue Clements
Bev Fraser

The Beaux Arts Société website was supported by R Squared Media and BAM.



AMBASSADORS

Ambassadors are the visitors' services volunteers at BAM. In addition to taking admission and selling memberships, Ambassadors warmly welcome guests and provide information about BAM and its exhibitions and programs. We appreciate and value all the individuals who have assisted us over the last year at Boise Art Museum.

2007 - 08 Ambassadors

Patricia Angel	Mona Meacham
Sarah H. Arnett	Joan Pariseau
Rochelle Cannella	Greta Pate
Stephanie Clarkson	Carol Pejovich
Diane D'Amelio	Sheryl Perry
Patricia Dinger	Beth Peshman
Christine Dwello	Patricia J. Spofford
Darrin Fuchs	Randy Stamm
Dottie Harrington	Calvin Swinson
Mary Hickman *	Mara Truslow
Jean F. Keisling	Dan and JoAnne Wertz
Clair A. Koetitz	Dian Wood
Lyndon R. Marquez	
Robert Mazzaferro	* now deceased

OFFICE VOLUNTEERS

Boise Art Museum appreciates the hard work and efforts of the clerical volunteers who help support smooth operations in the administrative offices.

2007 - 08 Office Volunteers

Trish Ebsworth
Mary Hickman *
Isabel Holt
Mara Truslow
Sheryl Perry
M.E. Foster

* now deceased

CURATORIAL INTERNSHIP PROGRAM

Curatorial interns complete a three- to six-month program that trains them for a professional museum environment while providing staff with valuable assistance in the curatorial department. Two stellar students from Boise State University, visual art/business administration undergraduate **Jennifer Iacoboni** and MFA graduate student **Nicole Herden**, both dedicated many months to BAM during the 2007-08 year. Both interns received BSU credits for their internships at BAM, supervised by Associate Curator of Art Amy Pence-Brown. Jennifer and Nicole both helped archive historic BAM materials, maintain the BAM Art Research Library, and received invaluable hands-on experience in the organization, installation, and deinstallation of fifteen BAM exhibitions.

BAM COLLECTORS FORUM

Collectors Forum is a Boise Art Museum membership group made up of dedicated art collectors and Museum patrons who generously support BAM acquisitions for the Northwest collection. At their 2008 Annual Meeting, *Collectors Forum* members voted to purchase, on behalf of Boise Art Museum, the following works of art:

Michael Brophy, *Beaver Trade*, 2002
oil on canvas, 78" x 84"

Todd Hido, *Untitled #6097 (Palouse Series)*, 2006
chromogenic darkroom print, 2/3, 38" x 48"

Rudy Kovacs, *Oaxaca Memories #5*, 2007
cotton, linen and silk, 64" x 45"

Katy Stone, *Edge of a World (wind)*, 2007
etched and lacquered steel, 74" x 132" x 15"

Educational art excursions are another focus of *Collectors Forum*. In 2007, the destinations were Denver, Colorado, and Los Angeles and Palm Springs, California.

2007- 08 Collectors Forum Board

Kay Hardy, *Chair*
Christine Raymond, *Past-Chair*
Arlene Davidson, *Chair Elect*
Nancy Bondurant, *Art Acquisitions*
Trudy Littman, *Secretary*
Bob Sabin, *Treasurer*
Nancy Halliwell, *Travel*
Suzanne Pollock Knibbe, *Programs*
Gayla Lyon, *Events*
Viki and Tom Dater, *Historians*
Shannon Davis-Jones, *Membership*
Carol Deasy, *Nominations*



Michael Brophy, *Beaver Trade*, 2002, oil on canvas, 78" x 84"
Boise Art Museum Collection, Collectors Forum Purchase

ACCESSIONS FISCAL YEAR 2007 – 08

Gift of M. Gary Bettis

Hiroshi Sugimoto
Ionian Sea, Santa Cesarea, 1990
gelatin silver print, 13/25
16 1/4" x 20"
2008.001.001

Gift of Mr. and Mrs. William and Denise Cargo

Frank Okada
IOU II, 1982
oil on canvas
55" x 129"
2008.002.001

Frank Okada
M-II, 1991
oil on canvas
80" x 60"
2008.002.002

Gift of Ric Collier

James Castle
Garden Valley Landscape (Yard with tent and tall fence), 20th century
soot and saliva on found paper
6 1/4" x 12 3/4"
2008.003.001

Gift of Melanie Fales

Ruth Wright
Corner of the Dock, 1986
color photograph, 7/30
8 1/2" x 12 1/4"
2007.018.001

Ruth Wright
Dressing Up #16, 1990s
gelatin silver print
11 3/4" x 7 15/16"
2007.018.002

Gift of Wilfred Davis Fletcher

James Castle
Untitled two-sided drawing (abstract house/Challenge Butter), 20th century
saliva, pigment of unknown origin on found paper
7 7/8" x 6 7/16"
2007.019.001

Gift of Anita Kay Hardy

Fabienne Gioria
Blue Bowl, late 20th century
raku-fired porcelain
3 5/8" x 3 5/8" diameter
2007.016.001

Gift of Anita Kay Hardy and Gregory Kaslo

William Lewis
Woodpile, 2006
oil on canvas
80" x 72"
2008.004.001



Melvin Edwards, *Premonitions*, 2007, screen print 55/60, 24" x 18", Boise Art Museum Collection
Gift of Curlee Holton, Faith Ringgold, Thelma and David C. Driskell, and Dr. Robert and Jean Steele

Gift of David and Mary Jane Hill

Robert R. Auth, Twenty-six lithographs, editioned 185/250

Bunkhouse Saturday Night, 1974
24" x 18"
2008.010.001

"Buckskin Bill" (Last of the Mountain Men), 1973
24 1/2" x 18"
2008.010.002

Buckskin Bill Memorial, 1980/2006
original design April 29, 1980
redesign/reprint May 10, 2006
24 1/2" x 18"
2008.010.003

Old Shaggy, 1973
18" x 24 1/2"
2008.010.004

Buffalo Hunter, 1972
18" x 24 1/2"
2008.010.005

Buffalo Stand, 1979
24 1/2" x 18 1/2"
2008.010.006

Coffeebreak, 1973
24 1/2" x 18"
2008.010.007

The Cree Bride, 1979
24 1/2" x 18 1/2"
2008.010.008

Ft. Boise Free Trappers, 1976
23 1/2" x 17 1/2"
2008.010.009

"Grizz", 1979
24 1/2" x 18 1/2"
2008.010.010

Le Bois Wagon Master, 1981
24 5/8" x 18"
2008.010.011

Nez Perce Scalp Dancer, 1978
24 1/2" x 17 1/2"
2008.010.012

Port Neuf Mountain Man, 1973
24 1/2" x 18"
2008.010.013

Salmon River Trapper, 1975
24 1/2" x 18"
2008.010.014

Silver City, Idaho, 1983
19" x 25"
2008.010.015

Wasatch Mountain Man, 1972
24 1/2" x 18"
2008.010.016

Wasatch Rifleman, 1972
18" x 24 1/2"
2008.010.017

Waterhole at Threeforks, 1974
18" x 24 1/2"
2008.010.018

The "Boise Bee" Stings a F.W.-190, 1983
24 5/8" x 18"
2008.010.019

PT on Final, 1979
24 1/2" x 18 1/2"
2008.010.020

Raid on Gerbini, 1980s
17" x 22"
2008.010.021

Stearman Duster, 1980
24 1/2" x 18 1/2"
2008.010.022

US Air Mail Route CAM 5, 1976
18" x 24 1/2"
2008.010.023

Idaho Birds of Prey poster, 1986
14" x 11"
2008.010.024

Peregrine Falcon Above Snake River Canyon, 1986
14" x 20"
2008.010.025

Don Quixote, 1974
24 1/2" x 18"
2008.010.026

**Gift of Curlee Holton, Faith Ringgold,
Thelma and David C. Driskell, and
Dr. Robert and Jean Steele**

Portfolio of twelve prints by African-American artists
30" x 22" each

Benny Andrews
Blues Player, 2006
etching, A/P 2/2
2008.005.001

Emma Amos
How Time Flies, 2004
mixed media print, 13/50
2008.005.002

Elizabeth Catlett
Francisco, 2006
screen print, P/P 2
2008.005.003

David C. Driskell
Dance of the Masks, 2008
screen print, 73/75
2008.005.004

Melvin Edwards
Premonitions, 2007
screen print, 55/60
2008.005.005

Sam Gilliam
New Bridge, 2004
mixed media, 35/50
2008.005.006

William T. Williams
Karen's Tale, 2008
screen print, 11/50
2008.005.007

Curlee Raven Holton
Legacy, 2007
screen print, 88/100
2008.005.008

Faith Ringgold
Papa Can Blow, 2005
screen print, 59/70
2008.005.009

Faith Ringgold
Nobody Will Ever Love You Like I Do, 2006
screen print, A/P 3/10
2008.005.010

Allan Edmonds
Family Series V, 2004
mixed media screen print, 24/50
2008.005.011

Robin Holder
They Damaged Us More Than Katrina, 2007
screen print, 37/50
2008.005.012

Gift of Ben and Aileen Krohn

Guy Anderson
Untitled, Male Reclining, 1987
charcoal on paper
22" x 29 3/4"
2007.022.001



Guy Anderson, *Untitled, Male Reclining*, 1987
charcoal on paper, 22" x 29 3/4", Boise Art Museum Collection,
Gift of Ben and Aileen Krohn

Marsha Burns
Daniella & Graziella, Rome, 1987
gelatin silver print
24" x 18"
2007.022.002

Marita Dingus
Untitled Bowl, circa 2005
wire and found objects
7 1/2" x 8" x 8"
2007.022.003

Karen Ganz
Balance #3, 1997
ink and collaged paper
21 1/2" x 15 1/2"
2007.022.004

C. Blake Haygood
Staggerer, 1998
drypoint etching in color, A/P
15" x 12"
2007.022.005

Barbara Noah
Pioneer 6, 1996
unique etching collage on paper
13 1/4" x 9 1/2"
2007.022.006

Jeffrey Simmons
Janet's Yellow, 1999
oil and alkyd on canvas
60" x 60"
2007.022.007

Francesca Sundsten
Bugaboos, 1998
graphite and insects on paper
25 1/2" x 20 1/2"
2007.022.008

Friese Undine
Liegt Mir in Herzen, 1998
mixed media construction
12 1/4" x 10 1/2"; 6" x 8" x 4 3/4"
2007.022.009a,b

Friese Undine
Numbers 22:21-31, circa 1997-98
acrylic on canvas
19 1/2" x 15 5/8"
2007.022.010

Gift of Bill and Deb Lentz

Artist unknown, Western Mexico
Female Effigy Figure, circa 200 BCE
terra cotta
12" x 8" x 7 1/2"
2007.021.001

Artist unknown, Russia
Icon, Mother of God of the Burning Bush, circa late
18th century
limewood, linen, gesso, gold, tempera and varnish
10 1/2" x 8 3/4"
2007.021.002

Gift of Terry Melton

Ken Shores
People Pot, 1950s
stoneware
9 3/4" x 5 1/2" x 3 1/2"
2008.006.001

George Cummings
Vessel, circa 1977
glazed stoneware
7 1/4" X 4 3/4" diameter
2008.006.002

Gift of René Rickabaugh and Gail Severn Gallery

René Rickabaugh
Huddle, 2007
watercolor on paper
6 1/16" x 7 15/16"
2008.007.001



Friese Undine, *Liegt Mir in Herzen*,
1998, mixed media construction
12 1/4" x 10 1/2"; 6" x 8" x 4 3/4"
Boise Art Museum Collection
Gift of Ben and Aileen Krohn



Stephanie Wilde, **Death's Harvest** (detail), 2006
mixed media, 13 panels: 12 panels, 64 1/4" x 10 1/4" each
One panel 64 1/2" x 8", Boise Art Museum Collection
Gift of Driek and Michael Zirinsky in Honor of Ruth and
Charles David Wright



William Lewis, **Woodpile**, 2006, oil on canvas, 80" x 72"
Boise Art Museum Collection
Gift of Anita Kay Hardy and Gregory Kaslo

Gift of the Sun Valley Center for the Arts

Terry Evans, *On Having Been Along the Salmon for Twelve Days in August*, 2002, 24 chromogenic prints, commissioned by the Sun Valley Center for the Arts for the exhibition *The Whole Salmon*, 2003

Salmon River Float Trip, August 14, 2002
29" x 29"
2008.011.001

Ralph Laurence: Jim Caples; Bill Swahlen; Ted Malestretti
10" x 40"
2008.011.002

Above Salmon River at Salmon, Idaho, August 11, 2002
10" x 29"
2008.011.003

Angelina McCrary, Stanley, Idaho, August 16, 2002
15" x 15"
2008.011.004

Salmon River at Salmon, Idaho, August 12, 2002
10" x 29"
2008.011.005

Salmon River, Lower Stanley, Idaho, August 7, 2002
10" x 29"
2008.011.006

Cliff Hansen, Rancher, Stanley, Idaho, August 8, 2002
15" x 15"
2008.011.007

Sawtooth Fish Hatchery, Stanley, Idaho, August 15, 2002
15" x 15"
2008.011.008

Kendal Osborn, Stanley, Idaho, August 7, 2002
15" x 15"
2008.011.009

Salmon River Hill Near Jack Ass Landing on the Middle Fork, August 15, 2002
19" x 19"
2008.011.010

Redfish Lake, Near Stanley, Idaho, August 15, 2002
10" x 29"
2008.011.011

Trailer, Stanley, Idaho, August 8, 2002
15" x 15"
2008.011.012

Douglas Bezaire, Sharkey Hot Springs, Salmon, Idaho
15" x 15"
2008.011.013

White Bird Library, White Bird, Idaho, August 14, 2002
29" x 29"
2008.011.014

Suzanne Cable, August 13, 2002
10" x 29"
2008.011.015

Jed Ellsberry and Brittany Woolley, Lower Stanley, Idaho, August 7, 2002
10" x 29"
2008.011.016

Dave Kimpton, Stanley, Idaho, August 15, 2002
19" x 19"
2008.011.017

Kaitlynn McCrary of Boise, Idaho, August 16, 2002
19" x 19"
2008.011.018

Ruth Niece, Stanley, Idaho, August 16, 2002
19" x 19"
2008.011.019

Salmon River During Summer Fires, August 15, 2002
19" x 19"
2008.011.020

Untitled Aerial II, August 15, 2002 [Burn Recovery Area]
19" x 19"
2008.011.021

Untitled Aerial I, August 15, 2002
19" x 19"
2008.011.022

Jim Killgore and Roselio Mendes, White Bird, Idaho,
August 14, 2002
17 1/2" x 36"
2008.011.023

Salmon River Inn, Salmon, Idaho, August 12, 2002
19" x 19"
2008.011.024

Gift of Wesley Wehr

Drawing attributed to James Castle
Fragment: Two Geese/Ducks, 20th century
soot and saliva on found paper
2 3/4" x 4 5/16"
2007.020.001

Gift of Driek and Michael Zirinsky in Honor of BAM's 70th Birthday

Troy Passey
The Seen World, The Unseen World, circa 2003
ink, graphite, acrylic, and gesso on aluminite
36" x 36"
2008.008.001

Brian Kershnik
Flight Practice, 1998
oil on paper
18 5/8" x 14 1/4"
2008.008.002

Laura Ragan
Burning Tree, circa 1996
oil on paper
5 13/16" x 2 9/16"
2008.008.003

David Airhart
Untitled (Red Shirt, Yellow Face), 1998
oil on board
25 5/8" x 32 1/4"
2008.008.004

Gift of Driek and Michael Zirinsky

Twelve works by artists associated with Idaho

Deborah Barrett
Woman in Green Cape, 2000
gouache, pencil and collage on linen
12 3/4" x 7 1/4"
2007.023.001

Karen Bubb
Untitled Spoon Portrait, 2000-2001
mixed media
6" x 5"
2007.023.002

Michael Corney
Face Cup, late 20th century
glazed and unglazed porcelain
4 7/8" x 3" diameter
2007.023.003

David French
Leaving the Post, 1996
oil on carved wood
2 elements: 22" x 1 1/2" diam.; 22 1/4" x 1 1/2" diam.
2007.023.004a,b

Del Gish
Shrubs in Snowy Landscape, late 20th century
acrylic on canvas
15 1/2" x 19 1/2"
2007.023.005

Molly Hill
Travelers, 2001
oil and tar on canvas
48" x 44 1/8"
2007.017.001

Kenna Moser
Idaho Apple, 2000
beeswax, vintage text and oil paint on oak
12" x 5 1/2"
2007.023.006

John McMahon
Untitled (Portrait of a Man), circa 2000
oil on masonite
6 1/8" x 6"
2007.023.007

Brian Murphy
Sleeping Self-Portrait, 1999
oil on canvas
72" x 96"
2007.017.002

Megan Murphy
Delilah, from the series *Lineage*, circa 2000
oil on sandblasted mirror
49" x 7"
2007.023.008

Terry Turrell
Escalator, 2001
mixed media sculpture
20 3/4" x 2" x 1 1/4"
2007.023.009

Amy Westover
Untitled (Figure of a Woman), circa 2006
soap sculpture with lithographed drawing
6 1/4" x 1 3/4" x 3/8"
2007.023.010

Gift of Driek and Michael Zirinsky in Honor of Ruth and Charles David Wright

Stephanie Wilde
Death's Harvest, 2006
mixed media
13 panels: 12 panels, 64 1/4" x 10 1/4" each; one
panel 64 1/2" x 8"
2008.009.001

Collectors Forum Purchases

Imogen Cunningham
Phoenix Recumbent, 1968
gelatin silver print, printed after 1968 and before 1974
10 1/16" x 9 3/16"
2007.024.001

Scott Fife
Chief Joseph, 2006
archival cardboard, glue, screws
34" x 14" x 22"
2007.024.002

Susie J. Lee
Consummation, 2006
single channel video projection on wood, with audio
Prelude #5 by J. S. Bach
14" x 62" x 7"
2007.024.003a,b

Laura McPhee
*Understory Flareups, Fourth of July Creek, Valley Road
Wildfire, Custer County, Idaho*, 2005
archival inkjet print
50" x 60"
2007.024.004

Museum purchase with funds donated by Driek and Michael Zirinsky

Hildur Bjarnadóttir
Untitled (Skulls), 1999
crocheted cotton yarn
3" x 54" diameter
2008.012.001

Museum purchase with funds donated by the Friends of Marie Watt

Marie Watt
Ledger: Tread Lightly, 2007
reclaimed wool blankets, satin binding
92" x 121"
2007.025.001

*This artwork was purchased in part by the Friends of
Marie Watt: Jacque Crist, Viki Dater, Dottie Goldman,
Sandy Harthorn, Jeanne King, Nancy LeMaster,
Pam Lemley, Gayla C. Lyon, Claudia McCain,
Gay Odmak, Esther Oppenheimer, Pat Pierose,
Sue Sanor, Jeri Waxenberg, and Driek Zirinsky.*



Imogen Cunningham
Phoenix Recumbent, 1968
gelatin silver print
printed after 1968 and before 1974
10 1/16" x 9 3/16"
Boise Art Museum Collection
Collectors Forum Purchase

MEMBERS & CONTRIBUTORS

Your support of Boise Art Museum enables us to further our mission of championing excellence in the visual arts through exhibitions, collections and educational experiences. THANK YOU!

INDIVIDUAL DONORS * denotes member of Collectors Forum auxiliary

\$5,000+

William and Denise Cargo
Meredith and Doug Carnahan *
Dr. Gordy Williamson and
Helen Copple-Williamson *
Paul and Charlotte Corddry
Peter and Arlene Davidson *
Bill and Carol Deasy *
Wilfred Davis (Bill) Fletcher
Virginia and Paul Geisler Bequest
Howard and Dottie Goldman *
George and Bev Harad *
Anita Kay Hardy and
Gregory Ames Kaslo *
Bennet and Aileen Krohn
Bill and Deb Lentz
A.F. (Skip) and
Esther Oppenheimer *
J. R. ** and Esther Simplot
** J.R. now deceased

\$1000 - \$4,999

Mary Abercrombie *
Sally Adams *
Floyd and Jacqueline Ayers *
Dr. Tom and Marilyn Beck *
Kermit and Glenys Birchfield
Lee and Nancy Bondurant *
Caleb and Christi Ann Chung
John and Amanda Corddry
Kellie Coshö
Gerry H. Cruser *
Tom and Viki Dater *
Chris Davidson and
Sharon Christoph
Roy and Frances Ellsworth *
Jerry and Bettie Ferguson
Brent and Sandra Fery *
John and Dee Fery *
Clark and Sydney Fidler
Jackie Groves Twilegar and
Ron Twilegar *
Richard and Sondra Hackborn *
Klara and R.V. Hansberger
C.K. Haun and Karen Meyer
Peter and Vicki Helming *
Tom and Alice Hennessey *
David and Mary Jane Hill *
Glenn Jans
Heather Jauregui *
Billye and Edward G. Jenkins *
Robert and Sondra Kantor *
Don and Mary Kayser *
J.R. and Jeanne King, Jr.
Dr. and Mrs. Patrick Knibbe *
Jack and Pam Lemley
Gayla C. Lyon *
Carol MacGregor PhD and
Gayle Brian Allen *
Fred and Mona Mack *
Jamie and Greg MacMillan
Jennifer and Terry McEntee
Jim and Karin Nelson *
Peter and Barrie O'Neill *
Jane Falk Oppenheimer

Ann and Gary Peterson *
Ken and Elizabeth Pursley *
Bob and Sally Richards *
Liz Roberts and Rick Clark *
Susan and Foad Roghani
Kari Saccomanno and
Daniel Prohaska *
Steve and Sue Sanor
Gail Severn and Blair Hull *
Cathy R. Silak and Nicholas Miller
Richard B. and June W. Smith
Tom and Carol Smith *
Nicole Snyder and
Jeff Snyder-Reinke *
Mary Lu Spencer *
Dick and Nancy Symms *
Cynthia and Matthew Thornton
Don and Carolyn Ticknor *
Kathy Troutner
Cathleen Wagnild Morgan and
Jon Wagnild *
Jeri Waxenberg *
Peggy Weideman-Smith and
Rodney Smith *
Gini and Bill Woolley *
Tom and Liz Zemlicka *
Michael and Driek Zirinsky

\$500 - \$999

Joan Adkins
Nate and Nancy Alexander
Mr. and Mrs. Robert Allis
Ann and Robert Avery
Dr. Diane Boothe *
Dr. Verle and Becky Breshears
Krista Brooke
Hollis Brookover and Milt Gillespie
Chuck and Susan Carlise *
Steve and Sue Clements
Bee Comstock *
Charles and Jacqueline Crist
Dr. James John Cruzen *
Tom and Linda Dixon *
Carolyn Perkins Duvall and
Don A. Duvall
Adrienne M. Edens
Brad and Annette Elg
Devon A. and Katherine M. Elstun
Melanie Fales
Chuck and Vicky Feast
Mary Gearn
Daniel and Mary Givens
Vicki Gowler
Ron Graves and
Diane Plastino Graves *
Nancy Halliwell *
Stephen G. Hanks
Sandy Harthorn
Joel and Marianne Hickman
Howard and Marci Hill *
Larry and Paula Hlobik
Ken and Alexa Howell
Erik Jones and Jennifer Ritter
Bruce Jones and
Shannon Davis-Jones *

Tom and Joy Kealey
James Kelly
Dr. John and Mrs. Lois Kloss
Dietmar and Pauline Kluth *
Belinda Knochel
Danielle and Gary Krouth *
Margaret and Frank Kruesi
Pete and Becky Langhus *
Nancy Lemaster
Dr. Bill and Lois Lenzi *
Irv and Trudy Littman *
Bill and Jane Lloyd *
Bill and Patsy Lodge *
Reilly and Amy McDevitt
Jo Anne Minnick
Alan and Royanne Minskoff *
Gay Bawa Odmark
Robert Deane Olson
Dr. Bob Olson
Dick and Susan Parrish
Patty C. Pierose
Greg and Christine Raymond *
Mike Reuling and
Marianne McIntosh
Tom and Charlene Ripke *
Ms. Alyce Rosenheim *
Becky and Bob Sabin*
Linda Coburn Saulls *
Molly Manschreck and
Matthew Schwarz
Joanne Springer
Bob and Jan Stewart *
Ed and Dottie Stimpson *
Ann Percy Stroud
Linda and Steve Swanson
Carolyn Terteling *
Fred and Joan Thompson *
John and Mikel Ward
Catherine Weick
Angela and Michael Wood
Christian and Kathryn Zimmerman

\$250 - \$499

Jon and Linda Adamson
John and Edwina Allen
Dorothy Barton
Christopher and Cynda Beeson
Carolyn Spicer Burke
Archie and Marilyn Clemins
Thomas J. and Joan C. Cooney
Linda Copple Trout
Ross and Suanne Corbet
Joan Cox
Kent Delana
Christine and Bruce Dodd
Harold and Jacque Eastman
Philip and Helga Fast
Greg and Mary Giersch
Willy and Margaret Gorrissen
Charley and Nancy Jones
Sondra and George Juetten
Rod Kagan
Dorothy and Robert Klomp Family
H. Larry and Ilene M. Leasure
Alexandra and Bayless Manning
Don and Diane Masterson

Claudia McCain
 Kevin and Lisa Myers
 Douglas F. Oppenheimer
 Lonnie and Annette Park
 Bruce and Pam Parker
 Larry and Liz Questad
 Lucinda Reinke and Charles Green
 Robert and Joan Rice
 Bron Roberts and Jeremy Gray
 Delbert and Alice Scott
 Peggy Ann Rupp and Matthew Sell
 Bill and Maggie Selvage
 Mike and Gloria Shirley
 Jeff and Anne Shneider
 Janet E. Silva
 Maggie Soderberg and
 Scott Simplot
 Bea Solis and John Kennedy
 JoAnn Butler and Michael Spink
 Jolene Starr
 Wayne and Peggy Thiessen
 Kevin Voyles
 Peter and Debbie Wachtell
 Matthew Weatherley-White and
 Andrea Sparrow
 Robert Vasquez and Joseph Wheat
 Barbara L. Wilson

\$150 - \$249

Kay Alspaugh
 Mickey and Bob Angell
 Chris Binion and John Roberts
 James and Tamera Brandstetter
 Marshall Brezonick and Lila Havens
 Cate Brigden and Steve Rust
 Carl and Gisela Burke
 Divit and Janet Cardoza
 Barry and Roz Cusack
 Pamela and Stephen Doucette
 Michael and Karen Falvey
 William J. and Christine Farrell
 Julie Nelson Firestone
 Mary Ellen Foster
 Marshall and Leslie Garrett
 Forrest and Lynne Geerken
 Mr. and Mrs. Thomas G. Heinrich, Jr.
 Elizabeth W. Jones
 Dr. Thomas and Mary Kruzich
 Besse LaBudde
 Dave Leroy
 Jack and Lynn Little
 Donald and Janine Lytle
 Bernadine Marconi and
 Kenneth Howell
 Warren and Bernie McCain
 Susan and Paul Ryan
 Lois Shaw
 John and Sylvia Sosoka
 Hester Stickney
 Beth and Chuck Vertrees
 Marcia Wing and Greg Garlick

CORPORATE, FOUNDATION & GOVERNMENT GRANT SUPPORT

\$100,000+

City of Boise

\$5,000 - \$99,999

J.A. & Kathryn Albertson Foundation
 Albertsons Inc.
 The Paul G. Allen Family Foundation
 Beaux Arts Société
 Boise State University
 Geisler Charitable Remainder Trust
 Harry W. Morrison Foundation
 Idaho Commission on the Arts
 Institute of Museum and
 Library Services (IMLS)
 J.R. Simplot Company
 J.R. Simplot Foundation
 Office Max Boise Community Fund
 US Bancorp Foundation
 US Bank
 URS Washington Division
 Wells Fargo

\$1,000 - \$4,999

Albertsons/SUPERVALU
 Greater Boise Rotary Foundation
 Heinz
 Idaho Power Company
 Intermountain Gas Industries
 Foundation, Inc.
 J Crist Gallery
 KeyBank of Idaho

Les Bois Partners, Inc.
 T.F. Dixon Family Foundation
 Target

\$500 - \$999

Advanced Sign & Design
 Boise State University
 Department of Literacy
 BP Fabric of America Fund
 CTA Architects Engineers
 D.A. Davidson
 Idaho Women's
 Charitable Foundation
 Lee Pesky Learning Center
 Merrill Lynch & Co. Foundation
 MWH Americas Inc.
 National Education Foundation

\$250 - \$499

Borroughs Hutchinson
 Cahill Jones
 Idaho Community Foundation
 Jensen-Belts Associates

\$150 - \$249

DaVinci Guild
 Feast Geosciences
 Robert and Lucille Smylie
 Charitable Lead Unitrust

MEDIA SPONSORS

Boise Weekly
 Idaho Media Corporation
 KTVB Idaho's NewsChannel 7



Las Artes de Mexico installation view, Boise Art Museum

Boise Art Museum

BOARD OF TRUSTEES 2007 – 08

EXECUTIVE COMMITTEE

Driek Zirinsky	President
Joel Hickman	Past President
Amy McDevitt	President-Elect
Dave Hill	Treasurer
Esther Oppenheimer	Secretary
Marilyn Beck	Member-at-Large
Bill Deasy	Member-at-Large
Anne Veigel	Member-at-Large
Wesley Jessup	Executive Director

TRUSTEES

Kathy Carney	Pam Lemley
<i>Docent Chair</i>	Jamie MacMillan
Arlene Davidson	Pam Parker
Annette Elg	Heather Messenger Schultz
Tonia Ginkel	<i>Beaux Arts Société Co-Chair</i>
<i>Beaux Arts Société Co-Chair</i>	Nicole Snyder
Bev Harad	Angela Wood
Kay Hardy	
<i>Collectors Forum Chair</i>	

MUSEUM STAFF 2007 - 08

Wesley Jessup, Executive Director

ADMINISTRATION

Stephanie Almeida, *Membership Coordinator*
Betsy Appelgren, *Development Director*
Hope Bernick, *Accounting Assistant*
Michelle Burks, *Art in the Park Coordinator*
Hana Van Huffel, *Receptionist/Data Entry Clerk*
Michelle Darcy, *Events and Rental Coordinator*
Donna McNearney, *Assistant to the Director*
Mary Schaefer, *Financial Manager*

MUSEUM STORE

Catherine Rakow, *Museum Store Manager and Curatorial Assistant*

Jenaleigh Kiebert, *Assistant Store Manager*

Sales Associates

Christine Harris
Melissa Swafford
Shauna VanKleek



Current Full-time Museum Staff December, 2008

Seated: Terra Feast, Donna McNearney, Jenaleigh Kiebert.

2nd Row: Melanie Fales, Michelle Darcy, Catherine Rakow, Sandy Harthorn, Hana Van Huffel, Kathy Bettis.

3rd Row: Rich Cardelli, Todd Newman, Stephanie Almeida, Amy Pence-Brown, Ron Walker, Mary Schaefer.

COLLECTIONS, EXHIBITIONS & EDUCATION

Kathleen Bettis, *Registrar*
Melanie Fales, *Curator of Education*
Terra Feast, *Associate Curator of Education*
Sandy Harthorn, *Curator of Art*
Todd Newman, *Assistant Preparator*
Amy Pence-Brown, *Associate Curator of Art*
Catherine Rakow, *Curatorial Assistant/Museum Store Manager*
Lisa Flowers Ross, *Curatorial Assistant*
Ron Walker, *Chief Preparator*

SECURITY

Rich Cardelli, *Chief of Security*

Security Staff

Cara Abdo	Craig Lawson
Julie Bond	Dani Lewis
Kristi Brumley	Gary Medders
Stuart Gowans	Lane Morgan
Frank Krone	Cassandra Schiffler

BEAUX ARTS SOCIÉTÉ

Yvonna Rowett, *Coordinator*

BAM | BOISE ART MUSEUM

Design and Production by: Teeter Graphic Design

Edited by: Donna McNearney and staff

Visit us online and view this annual report at www.boiseartmuseum.org

Cover art: Laura McPhee, *Understory Flare-ups, Fourth of July Creek, Valley Road Wildfire, Custer County, Idaho, 2005*, archival inkjet print, 50" x 60", Boise Art Museum Collection, Collectors Forum purchase



Boise Art Museum is accredited by the American Association of Museums



BAM is supported in part by its members, the Beaux Arts Société, Collectors Forum, Friends of Art, the city of Boise, the Idaho Commission on the Arts and the National Endowment for the Arts