

BAM | BOISE ART MUSEUM



ANNUAL REPORT

2021-2022

MAY 1, 2021 - APRIL 30, 2022

view online at www.boiseartmuseum.org

LETTER FROM THE EXECUTIVE DIRECTOR

LETTER FROM THE BOARD PRESIDENT



Credit: The Scout Guide Boise

Letter from the Executive Director

Although we continued to be challenged by the negative impacts of the pandemic, we were committed to making sure we served our community with exceptional visual arts experiences of the highest quality. With your generosity and participation, we were able to meet and exceed our goals for the benefit of our community. The following were among our many accomplishments:

- Receiving the award of National Reaccreditation from the American Alliance of Museums;
- Winning the award of a national IMLS grant reorganize our Permanent Collection areas;
- Winning the award of a national NEH grant to rehouse objects in our Permanent Collection;
- Piloting Accessibility and Inclusion strategies across all areas of the Museum with a national IMLS grant;
- Beginning a new Art and Healing program, Mindfulness Moments at the Museum, with chair yoga, guided breathing, and meditation within the installation Felix Gonzalez-Torres: “Untitled” (L.A.);
- Holding *Art in the Park* in person again after a year’s hiatus due to the pandemic;
- Creating a series of Virtual Artist Talks related to *The World Stage* exhibition;
- Conducting national Scholastic Jurying for high school students;
- Launching the *Let’s Arty* campaign with our colleague arts organizations in the month of March;
- Initiating our new, statewide Remote Learning Program, serving more than 20,000 students; and
- Organizing and installing multiple ambitious, timely, poignant, and diverse new exhibitions, notably *Many Wests: Artists Shape an American Idea*, which was the culmination of a three- year collaboration with the Smithsonian American Art Museum and three other nationally accredited art museums in the West and presented a multitude of artistic voices from our Permanent Collections.

One of the highlights of the year was a collaboration with the Boise Phil on February 5, 2022. It was a special evening of music and art in which we paid tribute to composers and artists whose lives and music were profoundly impacted by World War II. The performance featured works by composers Paul Hindemith and Bernhard Heiden, who immigrated to America to flee Nazi Germany; Polish composer Grazyna Bacewicz, who spent the war years displaced from her home, performing clandestine concerts; and Paul Chihara, who was one of thousands of Japanese Americans incarcerated at Camp Minidoka in Idaho, as a result of Executive Order 9066. On display in the exhibition *Many Wests: Artists Shape an American Idea*, at BAM, were two large-scale artworks, by artists Roger Shimomura and Wendy Maruyama, that helped tell the relatively unknown story of the perspectives of Japanese Americans who were incarcerated at Camp Minidoka. We were fortunate to welcome Paul Chihara as our guest of honor.

As you can see, our achievements span exhibitions, collections, and educational opportunities, in fulfillment of our mission. While we are doing more with less, we are moving the Museum forward in every possible way, with our community always at the top of our minds. Thank you to the board, staff, and to all of you for your loyal support.

Melanie Fales

Melanie Fales
BAM Executive Director/CEO



Letter from the Board President

Boise Art Museum is the heart of our artistic and cultural community, and I was pleased to lead its governance this year. This annual report highlights the Museum’s accomplishments and acknowledges those who have generously contributed to make it possible for BAM to continue to serve the community during our prolonged challenging times.

For nearly a century, the Boise Art Museum has been a fixture in our community. As the President of the Board of Trustees, I felt the weight, and the power, of those deep roots. Boise Art Museum’s mission “is to create visual arts experiences that engage people and inspire learning through exceptional exhibitions, collections, and educational opportunities.” The museum’s vision is “to be a vital partner in the educational, creative, and cultural life of our communities as an innovative leader in local, regional, and national visual arts.”

Last spring I was hiking in the foothills when I met a woman visiting from New Jersey. She was a psychology professor, in Boise for the first time, for the health crisis of a family member. I commended her for getting out onto the trails in such circumstances. She spoke about her trip and then said “Have you been to the Boise Art Museum? Have you seen their current exhibition?” I was the newly appointed president of the Board of Trustees of the Art Museum, so of course I had seen the fantastic new exhibition, *The World Stage*. Unaware of my involvement with the Museum, the woman praised it and the exhibition, which featured 90 works by some of the most influential American artists from the past 50 years, all from the collection of renowned art collector and philanthropist Jordan D. Schnitzer. Indeed, it was a bold, exuberant, far-reaching display, featuring artists of widely diverse backgrounds, worldviews, and approaches to art.

Eventually the woman favorably compared the Boise Art Museum to a number of quality east coast art museums. By this time I had told her of my role on the board, and how heartening it was to hear such a thoughtful and positive endorsement of our institution. At the end of our conversation, as we headed off in opposite directions, the woman reiterated that she couldn’t stop thinking about *The World Stage* exhibition, and that her visit to the Boise Art Museum had changed her perception of Boise, and of Idaho.

We are fortunate to have an exceptionally competent art museum director at the helm who has successfully led this institution through the prior great recession and the challenges of the global pandemic. We also look forward to the future of the Museum. It was here before us, and we intend to position it, healthy, vibrant, and relevant, to far outlive us. What an opportunity!

Amy Rustad

Amy Rustad
Board President, 2021-22

BAM Receives AAM Reaccreditation

The American Alliance of Museums (AAM), the only organization representing the entire scope of the national museum community, awarded reaccreditation to the Boise Art Museum (BAM). Only 3% (1,095 out of 33,000) of our nation's museums are currently accredited, and this is a high honor awarded to the Boise Art Museum based upon its professional and community practices.

National AAM reaccreditation demonstrates that the Boise Art Museum is publicly committed to upholding the museum field's high professional standards for education, public service, and collections care. By achieving this mark of distinction, BAM exemplifies the best that museums have to offer and serves as a reminder of the importance of museums to our communities.

Through a rigorous process of self-assessment and review by its peers, Boise Art Museum has demonstrated itself to be a good steward of its resources and collections and is committed to a philosophy of continual institutional growth. AAM noted that most impressive among BAM's achievements is the Museum's sense of its civic responsibility in the Boise area, such as its leadership in welcoming immigrant populations and implementing innovative strategies for inviting underserved visitors. They commended BAM as a model for its overall education program and for integrating diversity, equity, accessibility, and inclusion (DEAI), throughout the organization as evidenced in exhibitions, programs, and in commitment to on-going dialogue with the community.

Recognized as the field's gold standard for museum excellence for 50 years, AAM accreditation signifies a museum's quality and credibility to the entire museum community, to governments and outside agencies, and to the museum-going public. The program helps to ensure the integrity and accessibility of museum collections, reinforce the educational and public service roles of museums, and promote good governance practices and ethical behavior.



Tactile Representation Model for Michael Brophy's painting *Beaver Trade*



Tactile Representation Model for Marie Watt's sculpture *Canopy (Odd One)*



Video still of ASL interpretation for Felix Gonzalez-Torres: "Untitled" (L.A.)

Art and Inclusion at BAM

Boise Art Museum is committed to accessibility and inclusion. We believe that exhibitions, designed with the needs of a range of people of varying abilities, enrich the experiences of all visitors. New learning and engagement affordances to welcome people with low or no vision, no or low hearing, and other differences of ability were piloted within the exhibition, *Many Wests: Artists Shape an American Idea*, which opened on July 31, 2021 and was on display through February 13, 2022, at BAM.

Throughout the exhibition, visitors saw icons indicating new ways to learn about and engage with the artwork – such as Tactile Representation Models (touchable, three-dimensional reproductions of select artworks); Large-Print Labels; and an Audio Guide with Label Text, Visual Descriptions, and Artist Comments that were read aloud. BAM's website includes audio and text transcripts that are accessible to those using assistive technologies such as a screen reader and zoom.

Over the past year, BAM had been collaborating with inclusive design experts Corey Timpson and Sina Bahram. Through staff training, protocol development, and adopting an inclusive design methodology, the Museum facilitated access for the widest possible audience. In partnership with community members, especially those identifying as having disabilities, BAM created an Inclusive Design Advisory Group (IDAG). This group meets regularly to explore and discuss further opportunities for enhancing access at BAM. "Working with BAM has been incredibly rewarding. The commitment and dedication to inclusivity has been truly outstanding, and we can't wait for what is yet to come," said Sina Bahram and Corey Timpson.

After implementing the affordances piloted in *Many Wests*, BAM continued its accessibility and inclusion efforts with the following:

- an accessible webpage was created for *Felix Gonzalez-Torres: "Untitled" (L.A.)*;
- Spanish labels for *Contemporary Cuban Art: History, Identity, and Materiality*, from the collection of the *Jordan Schnitzer Museum of Art*, and *Felix Gonzalez-Torres: "Untitled" (L.A.)*; and
- ASL interpretation for *Felix Gonzalez-Torres: "Untitled" (L.A.)*.

It is the Museum's goal to welcome the widest possible audience. Welcoming everyone to the Boise Art Museum as a place to come together and learn requires a continuous focus on inclusivity as integral to everything we do. We are grateful to the funders who are helping us to meet this goal.



This project was made possible in part by the Institute of Museum and Library Services.



Generous support provided by Art Bridges.



This program is supported in part by a grant from the Idaho Humanities Council, a state-based program of the National Endowment for the Humanities.



Outside the Lines, Boise Art Museum installation detail, 2021.

Outside the Lines

August 24, 2019 – ongoing

Outside the Lines is the fourth and final exhibition inspired by Boise Art Museum's Art Cards, a project designed to encourage engagement with artworks in BAM's Permanent Collection. This exhibition explored the ways in which artists employ the elements of art and principles of design to convey mood, provoke emotional responses, and communicate with viewers. While the artworks were organized in themes of Line; Shape and Form; Space; Color and Value; and Texture; these categories often overlap. With the principles of design (such as balance, rhythm, emphasis, pattern, contrast, unity, and movement), artists use the elements of art to create their expressions in a vast number of ways.

Organized by the Boise Art Museum



BAM UNPACKED for kids: Mixed-Media Masterpieces, Boise Art Museum installation detail, 2020.

BAM UNPACKED for Kids: Mixed-Media Masterpieces

October 18, 2020 – ongoing

Displayed in BAM's ARTexperience Gallery, a space designed for children and families, the exhibition highlights a selection of artworks, featuring the use of non-traditional media in surprising and creative ways.

One of the most important and personal decisions an artist makes when creating an artwork is the choice of medium. The medium is crucial to the final work of art, the information it communicates, the emotion it conveys, and its impact on the viewer. Traditional art media include paint, graphite, paper, and canvas. Artists also choose to create works of art with non-traditional media, such as television parts, bird skeletons, or bicycle reflectors. Comprised of 14 artworks selected based on their non-traditional media, this exhibition showcases Idaho, regional, national and international artists, such as Claire Falkenstein, James Castle, and Takashi Murakami.

Organized by the Boise Art Museum



Io Palmer: Desired Interruptions, Boise Art Museum installation detail, 2020.

Io Palmer: Desired Interruptions

August 22, 2020 – July 4, 2021

Artist Io Palmer's desire to address social concerns drives her art. The exhibition *Desired Interruptions* was comprised of artwork inspired by material culture and systems of control. Palmer explores the arbitrary and abstract construct of borders that are connected to a general sense of personal and cultural boundaries, in both physical and metaphoric ways.

The slow, methodical pace of her work is meant to emphasize the importance of pensive reflection as a form of internal labor. Thick watercolor paper is painted with layers of pearlescent paint, cut into lacey forms, and sewn together into collaged, hanging panels. Silk-organza fabric is obsessively sewn with thousands of decorative, shiny objects. Her work borrows from two distinct worlds – opulence and humbleness – in order to better understand class tensions and connections.

Io Palmer lives in Pullman, Washington, where she is an associate professor of fine arts at Washington State University. She holds an MFA from the University of Arizona, Tucson and a BFA from Tyler School of Art (Temple University), Philadelphia, PA. In 2019, she received a Fulbright Nehru Research Grant to India.

Organized by the Boise Art Museum



Kehinde Wiley, *Marechal Floriano Peixoto II*, from *The World Stage: Brazil* series, 2009, Oil on canvas, 107 x 83 inches. Collection of the Jordan Schnitzer Family Foundation. © Kehinde Wiley. Courtesy of Roberts Projects.

The World Stage: Contemporary Art from the Collections of Jordan D. Schnitzer and His Family Foundation

March 6 – July 11, 2021

Featuring 90 contemporary artworks by 37 American artists of diverse backgrounds, *The World Stage* showcased prominent names from the 20th-century art canon alongside today's global influencers. The exhibition title was borrowed from the name of a series of paintings by Kehinde Wiley, an artist best known for his presidential portrait of Barack Obama, which hangs in the National Portrait Gallery. The selected works comprised a variety of media, from painting to installation, with a special focus on original prints made in a wide range of techniques. *The World Stage* included works by some of the most influential American artists from the past 50 years, including Jean-Michel Basquiat, Romare Bearden, Vija Celmins, Willie Cole, Helen Frankenthaler, Joe Feddersen, Mildred Howard, Jeff Koons, Jacob Lawrence, Hung Liu, Wendy Red Star, Robert Rauschenberg, Andy Warhol, and Kehinde Wiley. The artwork in this exhibition has particular relevance to the current conditions of our world, the major cultural shift in our nation prompted by the Black Lives Matter movement, and the roles of museums and collectors in society during times like this. Each artwork represents the individual experience and perspective of its maker to engage with larger global issues.

Organized by the Nevada Museum of Art

Sponsored by BEV AND GEORGE HARAD



Re-Framed: American Life, Legacy, and Ideals,
Boise Art Museum installation detail, 2021.

Re-Framed: American Life, Legacy, and Ideals

April 24, 2021 - ongoing

Re-Framed examines the notion of a shared American identity while recognizing the complexity of factors that determine each person's cultural and social viewpoints. Featuring artworks from the Permanent Collection that have not recently been shown, *Re-Framed* presents a multiplicity of artists who offer meaningful insights into both a personal and collective American experience. Exploring a range of ideas and perspectives that define us as a nation, this exhibition encourages a deeper reflection on the similarities and differences that comprise our diverse culture.

Organized by the Boise Art Museum

Suchitra Mattai: Breathing Room

July 24, 2021 – January 30, 2022

Using materials often associated with the domestic sphere, such as embroidery, weaving, and fiber elements, Suchitra Mattai creates large-scale installations, sculptures and two-dimensional artworks that navigate her family heritage while also unraveling historical narratives. She reclaims vintage and found materials, such as hand-made saris and other historically rich objects as a way of making sense of the world around her and the multiple cultures she inhabits as an Indo-Caribbean American. By recalling both her own family's ocean migrations and research on the period of colonial indentured labor during the 19th century, the artist re-writes this colonial history and contributes to contemporary dialogue by giving voice to people whose voices were once quieted and making visible the struggles and perseverance of those who lived through it.

Born in Guyana, Denver-based artist Suchitra Mattai received an MFA in painting and drawing and an MA in South Asian Art, from the University of Pennsylvania, Philadelphia. Mattai also received fellowships to study at the Royal College of Art, London, and at the American Institute of Indian Studies, Udaipur, India. She has exhibited her work in Philadelphia, New York City, Washington, D.C., Denver, Austin, as well as in London, Wales, and Sharjah, United Arab Emirates.

Organized by the Boise Art Museum

**Sponsored by the Pettitt Group at Group One Sotheby's
International Realty and Patty and Alan Head**



**Patty & Alan
Head**



Angel Rodríguez-Díaz, *The Protagonist of an Endless Story*, 1993, oil on canvas, Smithsonian American Art Museum, Museum purchase made possible in part by the Smithsonian Latino Initiatives Pool and the Smithsonian Institution Collections Acquisition Program, 1996.19. © 1993, Angel Rodríguez-Díaz

Many Wests: Artists Shape an American Idea

July 31, 2021 – February 13, 2022

Ideas about the American West, both in the popular imagination and in commonly accepted historical narratives, are often based on a past that never was, and fail to take into account important events that actually occurred. "The West" can conjure images of rugged colonial settlers, gun-toting-cowboys, or vacant expanses of natural beauty. *Many Wests: Artists Shape an American Idea* offered multiple views of "The West" through the perspectives of forty-eight modern and contemporary artists. Their artworks questioned old and racist clichés, examined tragic and marginalized histories, and illuminated the many communities and events that continue to form this region of the United States. The exhibition explored the specific ways artists actively shape our understanding of the life, history and myths of the American West.

Many Wests featured artwork from the permanent collections of the Smithsonian American Art Museum and four partner museums located in some of the fastest-growing cities and states in the western region of the United States. The collaborating partner museums were the Boise Art Museum in Idaho; the Jordan Schnitzer Museum of Art in Eugene, Oregon; the Utah Museum of Fine Arts in Salt Lake City; and the Whatcom Museum in Bellingham, Washington. It was the culmination of a multi-year, joint curatorial initiative made possible by the Art Bridges Foundation.

Art Bridges + SAAM Smithsonian American Art Museum

This is one in a series of American art exhibitions created through a multi-year, multi-institutional partnership formed by the Smithsonian American Art Museum as part of the Art Bridges Initiative.

Sponsored at the Boise Art Museum by

**THE HARDY FOUNDATION
Kay Hardy and Gregory Kaslo**

Winner

**Western Museums Association
Charles Redd Center for Western Studies
Award for Exhibition Excellence, 2022**

Many Wests: Individual Artwork Sponsors

BAM gratefully acknowledges the following donors who supported this exhibition by sponsoring individual works of art.

Rick and Rosemary Ardinger
Thomas and Marilyn Beck
Roberta Bloom
Jan Boles and Sylvia Tag
Gwen and Jim Brandstetter
B. Breshears
Sally Casler
Tami and Steve Casper
Jennifer Dickey and Andrew Huang

Patricia Hazard
Cherie Hennessey
Ardis Hewitt
Peter and Susan Hood
Bene Kaplan
Terry Keim and Skip Renschler
Lois Lenzi
The Irv and Trudy Littman Philanthropic Gift
Fund in the Idaho Community Foundation

Trish and Gregg Mizuta
Skip and Esther Oppenheimer
Jim and Mary Rickerd
Amy and Todd Rustad
Elke Scholl and Carroll Sims
Cathy Silak and Nick Miller
Lynn Wasser
Dana and Dan Zuckerman
Anonymous

EXHIBITIONS

EXHIBITIONS



Felix Gonzalez-Torres, *"Untitled" (L.A.)*, 1991
Green candies in clear wrappers, endless supply
Overall dimensions vary with installation
Original weight: 50 lb.
Jointly owned by Art Bridges and
Crystal Bridges Museum of American Art
On loan from Art Bridges
© Felix Gonzalez-Torres, courtesy of
the Felix Gonzalez-Torres Foundation

Felix Gonzalez-Torres: "Untitled" (L.A.)

February 5 – December 18, 2022

Felix Gonzalez-Torres was known for his minimalist, often conceptual, installations and sculptures that assembled quantities of a common object, such as a string of lights, stack of paper, or individually wrapped candy, to convey complex meaning and encourage audience participation. Through the manner of displaying the artwork, along with the process of the viewer's participation, each work became a metaphor for loss and healing, as seen in light bulbs that expire and are replaced, or as papers or candies are taken by visitors and replenished by the art museum. This cycle of depletion and renewal over time is key to the visitor's experience with, and understanding of, Gonzalez-Torres's creative practice. The artist sought to transform the spectator from a passive receiver to an active, reflective participant motivated by thought, feeling, and social action.

One of our goals in presenting *"Untitled" (L.A.)* was to restore public engagement with BAM after its long absence, due to the pandemic, which has caused us a tremendous sense of loss. It is our hope that by interacting with the installation and participating in the associated educational programs we have developed in collaboration with community partners, visitors experienced a greater connection with us as we collectively healed during a time of grief, isolation, anxiety, and depression, and as we sought solace and meaning together. By taking a candy from *"Untitled" (L.A.)*, visitors' participation created the work's ultimate meaning and shared sense of community.

Organized by the Boise Art Museum

Support provided by Art Bridges

Art Bridges

Everyday Objects: The Enduring Appeal of Still Life

March 5, 2022 – October 9, 2022

Often considered the art of imitation, the depiction of the still life has been practiced by artists for centuries. From the ancient Greeks to 17th century Dutch painters, from Cubists to today's contemporary artists, still life endures as a significant form of artistic expression—one that is contemplative and transformative—yet frequently overlooked.

Everyday Objects focused on tradition and innovation within the still-life genre. The exhibition featured works from the Museum's Permanent Collection complemented by inventive interpretations of the subject on loan by contemporary artists. Examining still life from three distinct perspectives—skillful observation, popular culture, and the unconventional—*Everyday Objects* revealed why still life remains a current and essential form of art in our daily lives.

Organized by the Boise Art Museum



Aimeé García Marrero, *Enigma*, 2004, dye transfer print, ed. 6/10, 31 x 24-1/4 inches, Collection of the Jordan Schnitzer Museum of Art, Museum purchase.

Contemporary Cuban Art: History, Identity, and Materiality from the collection of the Jordan Schnitzer Museum of Art

March 5, 2022 – May 22, 2022

Cuba has a diverse culture and complex history that is both fascinating and often misunderstood. Paradox, dark humor, beauty, sadness, and vulnerability connected the works on view in the exhibition *Contemporary Cuban Art*. Guest Curator Jill Hartz conceptualized this exhibition through the lenses of history, identity, and materiality as a structure to draw visitors into their own paths of discovery of contemporary Cuban art. Most of the Cuban artists whose artworks were featured in the exhibition, have benefited from a free education and meticulous training from a young age. Their extensive knowledge of Western art history and their honing of practice and technique have provided strong foundations for their individual visions and expression. Artists who are still living in Cuba reflected the daily challenges of survival in their art, while those now living in the U.S. and elsewhere conveyed the tensions of their hybrid citizenship. Regardless of their current physical location, however, all of them were fully engaged in expressing their personal relationship with their homes and the world with honesty, intelligence, and determination.

Jill Hartz was the Executive Director of the Jordan Schnitzer Museum of Art from 2008 to 2019. During her career, she had the good fortune to visit Cuba nine times over twenty years. She met many artists, curators, art historians, gallerists, and collectors on the island who have helped her to learn more about Cuban history and contemporary art.

Sponsored by 

Contemporary Cuban Art: Individual Artwork Sponsors

BAM gratefully acknowledges the following donors who supported this exhibition by sponsoring individual works of art.

Bill and Christine Avey
Mary and Rod Berkshire
Karen and James Bird
Sally Casler
Chris Davidson and Sharon Christoph
Julia Schlanger Davis
Kay Hardy and Gregory Kaslo
Hawley Troxell
Cherie Hennessey

David B. Hill
Peter and Susan Hood
V. Kreimeyer
The Irv and Trudy Littman Philanthropic Gift
Fund in the Idaho Community Foundation
Mary Ann Martini
Nick Miller and Cathy Silak
Patrick Riceci and Candice Crow
Jim and Mary Rickerd

Todd and Amy Rustad
Elke Scholl
Paul and Cydney Shubin
Laura C. Simic
Carroll Sims
Joanne Springer
Connor Tudbury
John and Nancy Werdel



Paulette Tavormina, *Lemons and Prickly Pears*, 2013, archival pigment print, 36" x 36", Courtesy of the Artist.

EDUCATION

When determining the strategic priorities for educational programming during the prolonged pandemic conditions, BAM made a renewed commitment to older adults, a population particularly vulnerable to isolation and mental health challenges. We continued virtual programs, including videos with artist talks, as well as hands-on project ideas to complete at home. For our in-person *Especially for Seniors* program, we offered 30-minute sessions with skilled practitioners in chair yoga, gentle movement, guided rest, breathing exercises, and mindfulness techniques to impart a sense of well-being for older adults. This new aspect of the program was developed in direct response to the expressed needs and interests of our community of older adults and out of an imperative to serve this important audience, now considered underserved by national standards. BAM also focused significant resources on our remote learning program for students and teachers and launched our Online ArtReach Program, serving more than 20,000 students in schools throughout Idaho. In addition, Teacher Institutes, Summer Camps for children and a Workshop for adults provided a wide range of visual arts learning and fun for adults and children.

In fiscal year 2021-2022, BAM's education programs were supported in part through grants and sponsorships from:

THANK
YOU

Art Bridges

Eggertsen Family Fund of the
Bank of America Charitable Gift Fund

Gladys E. Langroise Advised Fund in the
Idaho Community Foundation

Idaho Commission on the Arts /
National Endowment for the Arts

Idaho Humanities Council /
National Endowment for the Humanities

Idaho Power Company

Institute of Museum and Library Services

J.R. Simplot Company Foundation

Laura Moore Cunningham Foundation



▲ Teachers learn how to integrate art into their classroom curricula during BAM's summer Teacher Institutes.



▲ Summer Art Camp participants create watercolor landscapes.

EDUCATION INITIATIVES

Teacher Institutes

BAM has offered week-long Teacher Institutes each summer for the past twenty-one years. The programs are designed to help educators integrate art experiences into their daily classroom curricula and learn more about educational resources, while earning continuing education credits. In summer 2021, the Teacher Institute was planned in conjunction with the following exhibitions: *The World Stage* and *Lo Palmer: Desired Interruptions*.

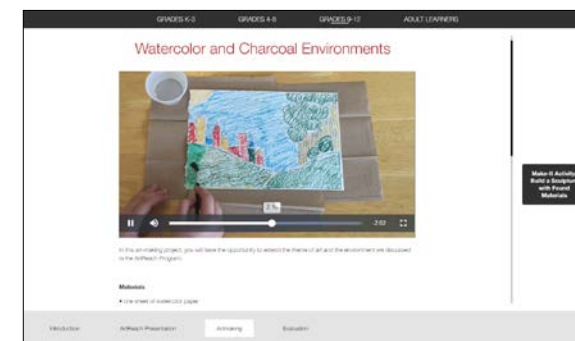
ArtReach Remote Learning Application

Boise Art Museum launched its new remote learning program for students in October 2021– the FREE Online ArtReach Program. BAM developed this digital application to meet the current and future needs of Idaho's teachers and students, with curriculum-aligned, cross-disciplinary educational content that meets state and national visual arts standards. BAM's new online platform includes themed lessons with images and information about artworks, discussion questions, and art-making videos. K-12 teachers making reservations for the program receive free art supplies for a related hands-on art project for students, and free admission passes to encourage students to visit BAM with their families.

In its first year, this program reached more than **20,000** Idaho students in classrooms throughout the state, which was more than three times the number we anticipated. The new digital platform allowed the Museum to expand BAM's valued school programs to reach classrooms across the state, creating equitable access to visual arts education opportunities for all, especially students in Title 1 schools, designated as such because they are in high-poverty school districts or serving neglected youth and educationally disadvantaged students.

Studio Art Program

Designed for children and adults, BAM's Studio Art Program encourages the creative abilities of all participants by providing experiences in a variety of arts media. All directly relating to BAM's exhibitions, in-person children's camps focused on sculpting, painting, drawing, and printmaking, while a virtual printmaking workshop for adult students focused on printmaking techniques that could be done at home.



▲ BAM's new ArtReach Remote Learning application



▲ Students create art in their classroom using BAM's new ArtReach Remote Learning application.

EDUCATION

EDUCATION

Partnerships and Special Opportunities

During fiscal year 2021-2022, BAM partnered with a range of institutions from area schools, universities, and state organizations, to arts groups, and local businesses to create meaningful programs. Partners included: Agency for New Americans, Ballet Idaho, Boise Contemporary Theater, Boise Phil, Boise State University, BOSCO, The Cabin, Jenelle Carberry/align with ease, College of Idaho, College of Western Idaho, Foothills School of Arts and Science, Idaho Botanical Gardens, Interfaith Sanctuary, Learning Lab, Lauren Lee, Nampa School District, Opera Idaho, Scholastic, Velma V. Morrison Center for the Performing Arts, Whittier School, and the Women's and Children's Alliance.

PUBLIC PROGRAMS

Monthly Programs

BAM's *Especially for Seniors* program offered free admission once a month for Seniors age 62+, and BAM also offered admission by donation the first Thursday of each month to ensure full community access to our exhibitions.

Especially for Seniors sponsored by



First Thursday at BAM sponsored by



The World Stage Virtual Artist Talks, Parts 2 and 3

In conjunction with the current exhibition *The World Stage: Contemporary Art from the Collections of Jordan D. Schnitzer and His Family Foundation*, BAM produced three virtual talks. The programs made space for expanded community reflection and dialogue, about history, art history, equity, and our diverse heritage and traditions, during this critical time in our global society. The first talk, on the topic of Women Transcending Boundaries, was released in the previous fiscal year, on April 12, 2021. The second talk, on the topic of Museums as Public Squares, was released on May 8, 2021. It was moderated by BAM Executive Director Melanie Fales and featured internationally known artists Hung Liu and Mildred Howard, as well as the Nevada Museum of Art's Curator JoAnne Northrup and philanthropist and art collector Jordan D. Schnitzer. The third and final talk in this series, on the topic of The Role of Art Collectors, was released on May 29, 2021. It was moderated by BAM Executive Director Melanie Fales and featured the Nevada Museum of Art's Curator JoAnne Northrup and philanthropist and art collector Jordan D. Schnitzer.

*We are saddened by Hung Liu's death on August 7, 2021, and are eternally grateful for her generosity of spirit and artistry.

This program is funded in part by a grant from the Idaho Humanities Council, a state-based program of the National Endowment for the Humanities. The views and opinions expressed by the speakers do not necessarily reflect those of the Idaho Humanities Council or the National Endowment for the Humanities.



▲ The World Stage Virtual Artist Talks, Part 2 (video stills)



Art + Healing: Mindfulness Moments at the Museum

Inspired by the installation of *Felix Gonzalez-Torres: "Untitled" (L.A.)*, BAM introduced in-gallery mindfulness activities and programing.

Buddha Board Wall & Mindfulness Prompts

In a space adjacent to the installation, visitors were encouraged to use water and a brush to paint on the Buddha Board wall to make a mindful creation. As the water slowly evaporated, the art magically disappears, leaving a clean slate and a clear mind. The memory of this experience is all that remains.

Chair Yoga at BAM

Alongside the installation *Felix Gonzalez-Torres: "Untitled" (L.A.)*, instructor Jenelle Carberry led visitors in chair yoga to help release tension from the body, along with breathing and mindfulness practices to calm the mind. This series launched on February 23, 2022, and continued on the third Wednesday of each month, in conjunction with BAM's *Especially for Seniors* day.

Program and exhibition support provided by Art Bridges



Art Delivered to Your Inbox

In consideration of the ongoing health and safety concerns of our members and visitors, and the positive comments about this initiative, we continued to provide *Art Delivered to Your Inbox*, making art resources available in a digital format. BAM's e-mail series *Art Delivered to Your Inbox* was distributed to BAM's e-newsletter subscribers each month. In these e-mails, readers could enjoy images, videos, links to artist biographies and other art resources, along with suggested hands-on art activities. On BAM's website, visitors could find videos of artist interviews, art demonstrations, and family activity guides. The development and distribution of these art resources demonstrates BAM's enduring commitment to be here to support our community with visual art during challenging times.

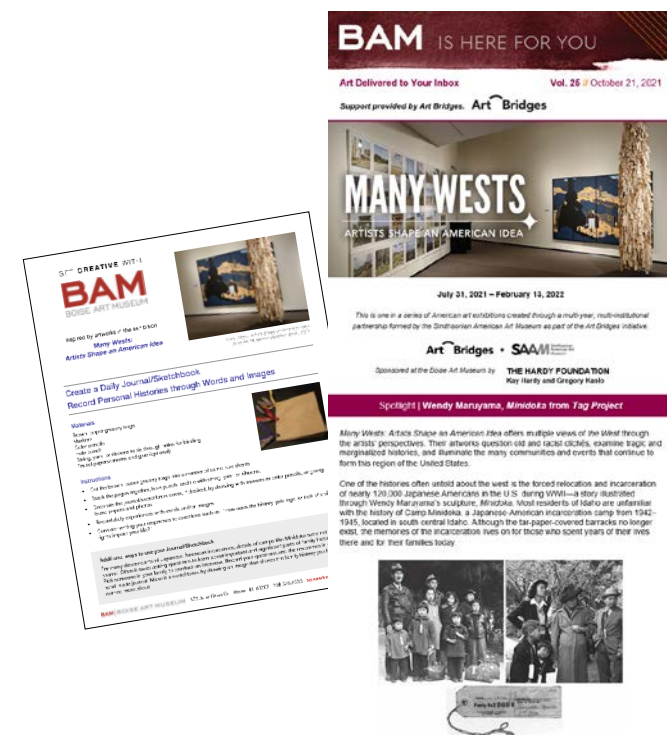
Support provided by



▲ Visitors make mindful creations on BAM's Buddha Board wall.



▲ Visitors enjoy chair yoga in the Sculpture Court in conjunction with BAM's *Especially for Seniors* day.



EDUCATION + COMMUNITY CONNECTIONS

Scholastic Awards Art Adjudication Partner

BAM is proud to support secondary students as a national Scholastic Awards Art Adjudication Partner to help identify and celebrate the next generation of young artists! BAM has served as awards partner for the past six years.

In January 2022, the Museum organized and facilitated local adjudication by panels of jurors who reviewed 6,000 art entries for the 99th Annual Scholastic Art and Writing Awards. Volunteer jurors made decisions based upon the awards' core values of originality, technical skill, and the emergence of personal voice or vision. Their selections were elevated to national panels of judges comprised of renowned artists, authors, educators and industry experts. An Award signifies to parents, teachers, the community and colleges that the student is an accomplished artist or writer.

COMMUNITY CONNECTIONS

Free Admission for BSU Students

BAM renewed its partnership with Boise State University to provide local college students, faculty and staff with opportunities to experience world-class visual art exhibitions and educational programs free of charge for an entire year. From August 26, 2021 through August 23, 2022, all full-time BSU students, faculty and staff with valid BSU identification cards received free admission to the Boise Art Museum. This year marked the 17th anniversary of this partnership which began as a pilot program initiated in 2005. This partnership continues to serve as a successful model of educational institutions working together to better serve students and the community.



New U.S. Citizens Membership Program

Boise Art Museum was pleased to continue BAM's *New U.S. Citizens Membership Program*. Introduced in 2019, this initiative provides free, one-year, family-level memberships to newly naturalized U.S. citizens living in Idaho within one year of naturalization. By inviting new U.S. citizens to become members of the Museum and welcoming participation, we diversify our society and create a space to gather, to make connections to people with similar interests and values, to develop a deeper sense of self and community, and to bridge perceived divides across cultures. Through this program, Boise Art Museum demonstrates its commitment to global inclusion as well as human rights and its concern for establishing a safe place in which art heals, expands minds, builds tolerance, and transcends boundaries.

Supported by Friesen Gallery, Sun Valley



▲ Boise State University students interact with the installation *Felix Gonzalez-Torres: "Untitled" (L.A.)*.

BAM Online Auction

BAM launched a new limited-time, online auction. Each week, from May 19 - July 26, 2021, BAM released a new selection of items for bidding, including art, antiques, and collectibles.* Proceeds benefitted the Boise Art Museum, a 501(c)(3) non-profit, educational, and charitable organization.

*BAM does not sell artworks from its Permanent Collection.

Music of Remembrance

On February 5, 2022, the Boise Art Museum collaborated with the Boise Phil to present a special evening of music and art at BAM. The performance paid tribute to composers and artists whose lives and music were profoundly impacted by World War II.

The performance featured works by composers Paul Hindemith and Bernhard Heiden, who immigrated to America to flee Nazi Germany; Polish composer Grażyna Bacewicz, who spent the war years displaced from her home, performing clandestine concerts; and Paul Chihara, who was one of thousands of Japanese Americans incarcerated at Camp Minidoka in Idaho, as a result of Executive Order 9066. On display in the exhibition *Many Wests: Artists Shape an American Idea* at BAM were two large-scale works, by artists Roger Shimomura and Wendy Maruyama, that helped tell the relatively unknown story of the perspectives of Japanese Americans who were incarcerated at Camp Minidoka.

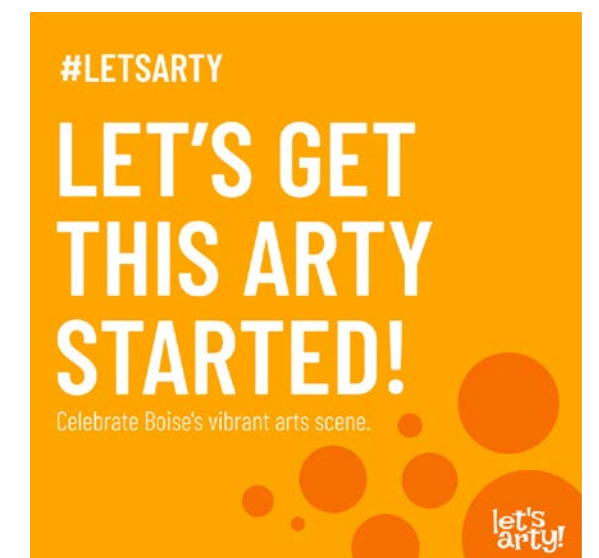
Let's Arty!

In March 2022, BAM participated in an exciting new event to celebrate the arts in Boise: *let's arty!* This was a collective endeavor by a group of Boise nonprofits to raise the visibility of our world-class performing and cultural arts—and to invite more people to participate in the arts. The eight participating organizations included: Ballet Idaho, Boise Art Museum, Boise Contemporary Theater, Boise Phil, The Cabin, Idaho Botanical Gardens, Velma V. Morrison Center for the Performing Arts, and Opera Idaho. Through a shared social media campaign, radio and print ads, and a branded beer collaboration, *let's arty!* helped bring awareness to Boise's wide range of arts nonprofits.

COMMUNITY CONNECTIONS



▲ Music of Remembrance collaboration with the Boise Phil at the Boise Art Museum. Photos: Brooke Burton



COLLECTORS FORUM

ART IN THE PARK

BAM COLLECTORS FORUM

Collectors Forum (CF) is a BAM membership group made up of dedicated art enthusiasts, patrons, and collectors who have been crucial to advancing the Museum's collecting mission for 30 years. Since 1990, this group has assisted the Boise Art Museum in the acquisition and preservation of art and participated in exciting, art-centered events, with like-minded members. To date, 73 works of art have been purchased for BAM's Permanent Collection with donations and assistance from CF members.

Four works of art purchased with Collectors Forum funds were selected for inclusion in *Many Wests: Artists Shape an American Idea*. This exhibition debuted at the Boise Art Museum and is now traveling to the Jordan Schnitzer Museum of Art in Eugene, Oregon; the Utah Museum of Fine Arts in Salt Lake City; the Whatcom Museum in Bellingham, Washington; and the Smithsonian American Art Museum in Washington, D.C.

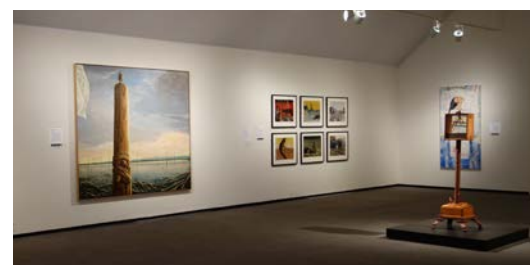
- Wendy Maruyama, *Minidoka*, from the *Tag Project*
- Michael Brophy, *Beaver Trade*
- Roger Shimomura, *American Infamy #2*
- Wendy Red Star, *Four Seasons: Fall, Winter, Spring, Summer*

Winner

Many Wests: Artists Shape an American Idea was honored by the Western Museums Association, winning the *Charles Redd Center for Western Studies Award for Exhibition Excellence, 2022*

Collectors Forum Members 2021-22

Mary Abercrombie
Bill and Marti Agler
Perry and Marilyn Brown
Brent and Sandra Fery
Dee Fery
Kay Hardy and Gregory Kaslo
Lois Lenzi
Sonya Lenzi
Skip and Esther Oppenheimer
Arlene Oyer
Peggy Ann Rupp
Laurie and Joe Ryan
Carroll and John Sims
Michael Spink and JoAnn Butler
John and Mikel Ward
David Whitaker



Works purchased with Collectors Forum funds on display in *Many Wests: Artists Shape an American Idea* at the Boise Art Museum.



Photo: Julian Jenkins / jenkinsphoto.com

67th Annual Art in the Park September 6-8, 2021

Boise Art Museum's *Art in the Park* is widely recognized as one of the premiere cultural events in the Northwest. Beautiful Julia Davis Park serves as the natural backdrop for *Art in the Park*, presented the weekend after Labor Day in September each year. This annual open-air festival provides visitors of all ages and interests with the opportunity to meet more than 250 artists and purchase their works. During the three-day event, Boise Art Museum presents a variety of contemporary arts and crafts along with wonderful food and hands-on activities for children. More than 250,000 people are drawn to experience *Art in the Park* each year to shop outdoors in downtown Boise, the "city of trees."

We appreciate the support of our partners for helping to make *Art in the Park* 2021 a success. They included: participating artists, food vendors, performers, Boise City Parks and Recreation Department, Boise City Public Works Department, Boise Cold Storage, Boise State University Campus Sustainability, Cascade Student Transportation, Dawson Taylor Coffee Roasters, Erstad Architects, Event Rent Idaho, Injury Care EMS, Republic Services.

We are also grateful to the hundreds of volunteers who assist with *Art in the Park* each year, making it possible for the Boise Art Museum to present a successful event of this scale for our community.



2021 EVENT SPONSORS





FINANCIAL OVERVIEW

ACQUISITIONS
GIFTS + PURCHASES

FINANCIAL OVERVIEW

Statement of Financial Position
April 30, 2022

ASSETS	
Cash and Cash Equivalents	\$ 878,464
Operating investment in certificates of deposit	959,215
Endowment Investments	2,859,984
Prepaid Expenses	11,534
Merchandise Inventory	34,251
Furniture and Fixtures, net of accumulated depreciation of \$417,200	173,028
Note: Art Collection not capitalized	
TOTAL ASSETS	\$ 4,916,476
LIABILITIES AND NET ASSETS	
LIABILITIES	
Accounts Payable and accrued expenses	\$ 33,037
Deferred revenue	52,140
TOTAL LIABILITIES	\$ 85,177
NET ASSETS	
Without donor restrictions	\$ 3,477,529
With donor restrictions	1,353,770
TOTAL NET ASSETS	\$ 4,831,299
TOTAL LIABILITIES AND NET ASSETS	\$ 4,916,476

Condensed Statement of Activities
Year ended April 30, 2022

TOTAL SUPPORT and REVENUES	\$ 2,735,359
EXPENSES	
Supporting Services	590,817
Program Services	1,449,435
TOTAL EXPENSES	\$ 2,040,252
CHANGE in NET ASSETS - Operating	695,107
CHANGE in NET ASSETS - Non-operating	(192,831)
Collection items purchased, not capitalized	(1,500)
CHANGE in NET ASSETS	500,776
NET ASSETS, BEGINNING of YEAR	\$ 4,330,523
NET ASSETS, END of YEAR	\$ 4,831,299

The above condensed statement of activities reflects information taken from the Museum's financial statements audited by Eide Bailly LLP, of Boise, Idaho.

SELECT ACQUISITIONS: GIFTS

Gift of Gail Goodrich & Toni C. Goodrich

Richard Diebenkorn
Untitled, c. 1960-66
ink on paper
17" x 14"



Gift of Kay Hardy and Gregory Kaslo

Robert Turner
Ashanti, 1974
Glazed stoneware
15 1/2" x 13"



Gift of Vicki Helming

Italo Scanga
Red Field, 1989
charcoal and acrylic on paper
45 1/2" x 37"

Gift of Kohler Foundation, Inc.

Barbara Rossi
Footprint Picture, 1975
screenprint
10" x 13"

Barbara Rossi
Z-Zone, 1975
screenprint
10" x 13"

Barbara Rossi
Eye Deal, 1973
print
16" x 12"

Barbara Rossi
Moon Meet May, 1993
etching
22 1/2" x 29 3/4"

Barbara Rossi
Poor Self Trait #1: Dog Girl, n.d.
etching
10 1/4" x 7 1/4"

Barbara Rossi
Sovereign, 1970
etching
11 3/4" x 8 3/4"

Barbara Rossi
Sovereign, 1970
print
11 3/4" x 8 3/4"



Barbara Rossi
Shep, n.d.
etching
8 1/2" x 6 1/2"

Barbara Rossi
Footnote on Portraiture, 1970
color print on satin
14" x 10"

Barbara Rossi
Footnote on Portraiture, 1970
black and white print on satin
14" x 10"

Barbara Rossi
Portrait #2, n.d.
photo etching
7" x 9"



Gift of Pat Nelson

Brad Rude
Untitled, 1995
bronze
34" x 26" x 10"



ACQUISITIONS: PURCHASES

Museum purchase

John Feodorov
Vanitas #4, 2011
lithograph, edition 1/12
30" x 22 1/4"



Museum purchase with funds donated by Yvonne McCoy in honor of the BAM Docent Program

Ramon Murillo
Blazing Sun and Protector Salmon Spirit, 2005
lithograph, edition 5/10
32" x 18"





INDIVIDUAL SUPPORT

INDIVIDUAL SUPPORT



A Teacher Institute participant explores printmaking



Many Wests, Boise Art Museum installation detail, 2021



Summer Camp participants show their Warhol-inspired artworks

THANK
YOU

We simply would not be here without our funders, supporters, members and contributors. We are thankful to each and every one. The Museum gratefully acknowledges those whose memberships and contributions have supported our exhibitions, collections, educational programs, activities and services. THANK YOU!

(This list reflects funds received from May 1, 2021 - April 30, 2022.)
Gifts are acknowledged within the following giving categories.

Renaissance Circle (\$100,000 +)

Estate of Thomas J. Cooney

Classical Circle (\$50,000 - \$99,999)

Estate of Clifford and Kay Snider

Expressionist Circle (\$5,000 - \$24,999)

Kay Hardy and Gregory Kaslo

Alan and Patty Head

Gail Severn

Mrs. Esther Simplot

Romanticist Circle (\$1,000 - \$4,999)

Mary Abercrombie

Bill and Marti Agler

Marilyn Beck

Nancy Bondurant

Terry and Julia Bowman

Jim and Gwen Brandstetter

Brooke and Jeff Brouman

Perry and Marilyn Brown

Doug and Meredith Carnahan

Sharon Christoph

Caleb and Christi Ann Chung

Armando Costales and Wendy Payton

Brent and Sandra Fery

Dee Fery

Tom Foerstel

Willy and Margaret Gorrissen

Glenn and Leslie Hadden

Ardis Hewitt

David Hill

Peter and Susan Hood

Thomas and Mary Jenkins

J.R. and Jeanne King

Belinda Knochel

Carol Lloyd

Patricia McClung and Allen Morgan

Yvonne McCoy and Garry Wenske

Lisa McCuiston

David Monsees and Caroline Morris

Skip and Esther Oppenheimer

Bill and Andrea Pettitt

Lindsay Randolph Davis and Don Davis

Peggy Ann Rupp

Todd and Amy Rustad

Laurie and Joe Ryan

Matthew Schwarz and Molly Mannschreck

Elizabeth and Andrew Scoggin

Cathy R. Silak and Nicholas G. Miller

Carroll and John Sims

Loretta Tims

John and Mikel Ward

John M. and Nancy Werdel

Dan and Dana Zuckerman

Modernist Circle (\$150 - \$999)

Cargie Aitchison and Steven Bublitz

Gary and Liz Allen

John and Edwina Allen

Bret and Nicole Amideo

Rick and Rosemary Ardinger

Gertrude Lee Arnold

Paul Aschenbrenner

Christine and Bill Avey

Galen Barnes

John Barnet and Jeannette Bowman

Sandra A. Beebe

Sharon Berg

Mary and Rod Berkshire

Dave Bieter and Julia Nemeth

James and Karen Bird

Ron and Roberta Bloom

Jeffri and Mary Bohlscheid

Jan Boles and Sylvia Tag

Rose Bowman

Becky Breshears

Hollis Brookover and Milt Gillespie

Patrick Burke

Robin Butler

Debbie Campbell

Divit and Janet Cardoza

Ann Carlson

Mike Carney

Scott and Helen Carter

Sally Casler

Steve and Tami Casper

Lois Chattin

Charles Christiansen

Darla and Steve Christiansen

Garth H. Claassen and Karen Brown

Dan and Nancy Clements

Steven Cole and Sydney Youngerman

Judy and William Collins

Jylana Collins and Marilyn Girard

Claude and Susan Connelly

Gail Corlett-Trueba

Tom and Laurie Corrick

Sharon R. Costales

Lawrence Costello

Kirsten and Michael Coughlin

Ellen Crosby and Jim Meide

Elaine Daly

Julia Davis

Bob and Tori Dell

Daniel DeLuca

Janet Dickey

Jennifer Dickey and Andrew Huang

Judith and William Donovan

Alan Dornfest and Virginia Gillerman

Scott Duffin

Bernard and Judy Echanow

Kimberly Eckman

Dr. and Mrs. Charles Eiriksson

Brad and Annette Elg

Roy and Frances Ellsworth

Sandra Evans

Steve and Patty Evans

George and Patricia Everett

Melanie Fales

Michael and Karen Falvey

Christine Farrell

Helga and Philip Fast

Kate and Robert Fick

Joseph H Fields III and Elizabeth J Grosse

Jon and Leslie Fishburn

Marybeth Flachbart

Rita and Stan Fleck

Paul and Susie Frank

Pamela Fraser

Andria Friesen

Stefanie Fry

Marguerite Frye

Michele Gardiner

Libby and Gavin Gee

Charles and Elaine Gill

Wilma Gnemi

Dottie Goldman

Geoff and Anna Hayward Goss

Ron Graves and Diane Plastino Graves

Russell R. and Mary Ellen Grobe

Tim Grudt

Alan Gummersall

Sherry and Ernest Hamilton

Roberta Hansberger

Valerie and Paul Hartl

Sylvia Hays

Patricia Hazard

Mike Heckler and Sandra Shaw

Doug and Carole Heimforth

Vicki Helming

Alice Hennessey

Cherie A. Hennessey

Harriet Hensley

Angie Hester

John and Patricia Hinman

Renae Hoff

Mark Hofflund and Lynn Allison-Hofflund

Pat Hoffman

Mark and Rebecca Hoffmann

John and Alyson Jackson

Glenn Janss

Roberta L. Johnson

Vicki and William Johnson

Jim and Lynn Johnston

Robert and Catherine Jones

Tom and Cindy Jones

Steve and Michael Joyce

George and Sondra Juetten

Dorene Kahl and Don Zancanella

Diane Kahn

Marie and Chris Kantarian

Bene Kaplan

Terry Keim and Skip Renschler

Michelle and Sean Kenney

Mark Kieckbusch and Kathryn Earhart

Dr. John Kloss and Lois Kloss

Nancy C. Kobe

Douglas and Jan Kochan

Bonnie Krafchuk and Rico Young

Vicki Kreimeyer

Shira and Jeff Kronenberg

Dr. and Mrs. Thomas Kruzich

Susan Lamberson and Bill Kaage

Boyd and Mary Leavitt

Lois Lenzi

Sonya Lenzi

Irv and Trudy Littman

Woodina Livingston

Steven and Beverly Losleben

Roger Malinowski and Linda Perez

Alexandra Manning

Mary Ann Martini

Martin and Evelyn Marzinelli

Linda and Paul Mascuch

Philippe Masser and Kathleen Sutherland

JE McEachern and Harmony Schroeder

Pat and Lisa McMurray

Rhiana Menen

Pat and Laura Metzler

Stephanie Miller

Donald Mitchell

Gregg and Trish Mizuta

Bill and Suki Molina

Judith L Muoio

Nancy Nadolski and Steve Severn

Rebecca Nevarez

Murray and Sharee Newman

Gizella O'Neil

Douglas and Mary Oppenheimer

Nancy and Suzanne Oppenheimer

Cynthia Ortiz James and Bob James

Dr. Lois Ortmann

Arlene Oyer

Lonnie and Annette Park

Tony Park and Gail Chaloupka

Paige Alan Parker

Susan Parrish

Judson Parsons and Diana Gardener

Bonnie and James Peacher

Cynthia and John Pearson

Marjorie P Perl

Marcus and Shawna Phillips

David and Sarah Poole

Rich and Georgiann Raimondi

Gregory and Christine Raymond

Henry and Sue Reents

Carolyn and Tom Reeves

Patrick Riceci

Gary Richardson and Diane Ronayne

Jim and Mary Rickerd

Suzan Roark

Alyce Rosenheim

Cheri Ruch and Mark Yasuda

Elizabeth Schneider

Elke Pont Scholl

Alice Scott

William and Margaret Selvage

Kenneth and Janet Sherman

Cydney and Paul Shubin

Laura Simic

Adelia Simplot

Scott Simplot and Maggie Soderberg

Janet and Larry Sims

Carole and Rick Skinner

Jeffrey L. and Jo-Anne Smith

Mark and Monique Smith

Richard Smooke

Dorothy Snowball

Scot L Spicer

Michael Spink and JoAnn Butler

Joanne Springer

James and Christin Steele

Joseph and Deborah Stegner

Maryan F Stephens



INDIVIDUAL SUPPORT

INDIVIDUAL SUPPORT

<p>Kay Stevenson Susan Stinnett James and Barbara Stokes Pat and Jill Storey Nancy J. Stouffer Rita Sturiale Michel and Rebecca Swartz Nancy Symms Frank and Judith Taylor Mary Lou Taylor Dave Thiel Wayne and Peggy Thiessen Glenn C. and Isabel Thurston Robert and Clare Trerise Connor Tudbury John H. and Jeanette Ullery Carolyn Valiquette Bruce Van Dusen and Susan Whiting Jim and Irene Vance Carla Verastegui and Alfredo Cruzat Ms. Sarah Waddell Elizabeth and Brian Wallingford Jane Anne Warkentin Lynn Wasser Connie E. Weaver Julie Weller Chad Weltzin and Sally Spaulding Dan and JoAnne Wertz Barbara Wescott and Barry Samuels Brent Williams and Melanie Paquin Barbara L. Wilson Jacquie Wilson Carol and Steven Writer Kathy Yamamoto Driek and Michael Zirinsky Anonymous (2)</p> <p>Up to \$150 Starleen K. Abbasi Louie and Susan Abdo Rachel Abroms Gail Ackerman Kayla Adams Jon and Linda Adamson Betsy Aguilar Patricia S. Ahrens Jennifer Alban Cheryl Albers Nathan and Nancy Alexander Patricia Alexander Karen Alfonso-King and John King Elise Alford and Micah Claffey Stephanie and Samuel Aliberti Angela and Jeremy Allen Carol Allen Margaret Allen and Bill Sonnenburg Mary Ann Allison</p>	<p>Ashley Alloway and Kevin Fuller Patricia Alpine Jim and Phyllis Alter Kristin Alvarez Dorothy Anderson Bonnie J Anderson-Liles Kim Andrich Kaye Andrijeski Bob and Mickey Angell Desmond and Emily Anim-Appiah Allan R. and Connie Ansell Lindsey Antram Ted Apel Patricia and Keith Applegate Dave Arellano Terry Armbruster Amber Armstrong JoAnn Armstrong Pat Armstrong Dianne Arndt and Doug Laber Mary Arnold Arin Arthur Mary Ann and Marty Artis Irene and Stephen Asher Ronald and Susan Ashla Rebecca Taylor Ashlin David Ashmore and Joanna Madden-Ashmore Dorothy Ashmore Ella Avitto and Brandy Lawson Alex and Michelle Axtell Judy Babbitt Gail M. Baccheschi Dani Backer Paul and Margie Baehr James Bailey, Jr. and Elaine Daniel Sarah Bailey Willa C. Bailey Elizabeth Young Baker Nellie Baker H. Marie Baldner Beeb Balzer and Cal Gillis Jennifer and Jeff Banks Vernon and Jo Banks Robert and Anna Barclay Marianne Barker Warren Barnes and Amy Burkholder Bill Barron and Janet Gallimore Anne Barton Schonhardt Adie and Joel Bartron Amy Baruch Susan and Chris Baughn Mary and Jerry Baumunk Art and Michelle Beale Thomas and Laurie Beatty Carol Beaver and Kate Cecchini Beaver Tiffany and Darren Beck Rose Beebe Shawna Beechinor and Jeff Cliff Christopher and Cynda Beeson Craig and Bonnie Belcher</p>	<p>Thea Belec Karen and Glenn Bell Susan Bellamy Al Bellister Alan and Diane Benfer Steve Benner and Kathleen Fahey Don and Cindy Benson Eileen Benson Mary Elizabeth Benton Emil Berg Carilyn Bergamini Suzanne and Michael Bergmann Pam Bernard and Donna Ehrenreich Philip Bernard John Bernardo John Bertram Byron Best Carl and Gloria Bianchi Sarah Bianchi Jerry Bindas Chris Binion and John Roberts Marilyn Bischoff Truman Bishop Walt and Sherry Bithell Michael and Sharon Bixby Fritz Bjornsen Gayle Black Janie Black Morris Marsha and Harold Blackman Laurie Blakeslee Tim and Bev Blank Gretchen Bleffert Marcia Bleymaier Willard Blitman Richard Boddie and Eloise Cronin Bill and Karla Bodnar Brett Bohnert Dan and Sarah Bohren Dario Bollacasa and Susan Scott Richard and Suzanne Bolton Kara Book and Todd Williams Kristin Booton Jade Bouvrette Laura and Dan Bowen Carolyn S. Bowler Brenda Bowles Beverly Boyd Edward Bracht Susan Bradford Gary Bradshaw Jerry Brady Yvonne Brandt David L Breithaupt, Ph.D Barbara Brennan Daryl Bridges Marti Bridges Jessica and Greg Briggs Harold and Marcia Brinton James E. and Mary Fran Brown Karen Brown</p>	<p>Mary Brown Scott Brown and Ranelle Nabring Laura J Bruce Ronald Bruce and Lisa Moser Ingrid and Bill Brudenell Karen Bubb and Robert Engbers Jim Budde and Nancy Quinn-Budde Patricia Buddress Nancy Budge and Gay Whitesides Pat and Bruce Budge Jill Buelsing Linda Buersmeyer Benjamin Burdick and Jessica Morris Gisela Burke Max and Darlene Burke Rodney K Burks Lynn A. Burnett Charles Burridge and Mary Feeny Paula Burry Russ and Janet Buschert Linda Bush Annette and Kenneth Butler Susi Cagen Beverly Callaway Tom Callos and BJ Quinn-Shook Luz María Camarena Q. Carolyn Cannon Tina Cannova Roseanne Caputi John and Joan Carley Heather and Vince Carlson David Carpenter Melissa Carr Mary Beth Carson Sharon Carswell Laura Caruso Eric Case Nadine Casebolt Carol K. Casler Annie Chalfant Melissa and Mike Chambers Soeurette Chambreau and Larry Sandusky Marcia Lewis Chatalas Houng Chea and Albert Liao Kevin and Amy Chen Catherine and Jim Chertudi Michelle and David Choate Dave and Leda Christian Dr. David Christiansen Cynthia and Bill Clark Pamela J Clark T.J. Clifford and Ida-Louise Smit Hartzell and Joy Cobbs Carolyn Coiner Mongina Cole Teresa Cole Connie Cole-Craven Lawrence and Gail Conn Glenda Connolly Isaac Coombs and Malinda English</p>	<p>Janice Cooper Patti Copple Linda Copple Trout Carolyn S. Corbett Michael Cordell James and Kimberly Corey Carol Dee and Carl Cornwall Ronaldo and Ossalina Coulter Benjamin and Aliza Cover Stephen Cox and Kathleen Yochum Elizabeth Criner Carol Crothers and John Katseanes Carlyn Crow Colleen Crow Dianne and John Crowe Amy Crownover Stephanie and Glenn Crumrine Kimberly Crusier-Scott Ellen Cryder Heidi Cunningham Donald Curtis, Jr. and Scott Squier Roz and Barry Cusack Savanna and Shane Dabel Christian Dahlstrom Patsy Dalton and Barry Cole R. Diana D'Amelio Jay Dark and Suzanne Janzen JoAnn Davich Fonny Davidson Gary and Alexis Davis Jon R Davis Julie Davis Julie Davis and Daniel Malarkey Linda Davis Paula I Davis Sarah Davis and David Lee Sheri Davis and Steve Dresser Sheryce Davis Susan Nelson Davis Zoe Davis and Grant Sheely Fay and Darren De La Cruz Nathan Dean Ann DeBolt Barbara Decker Dennis DeFoggi Carolyn DeLaHunt Bruce and Laura DeLaney Carol S. Delaney Sharon Sample DeLong Kirstin Delp Kora Delta Anna Demetriades Ridgley Denning Derek and Ashley Derkacs Katherine and Brian Devlin Nichole Di Dio Diana Diaz and Rod Frost Marion Dickey Janet Diebenow Elaine J. Diner</p>	<p>Dr. and Mrs. Ronald Dobson Melissa Lloyd Dodworth Laurie Doering Kristi Dohner Patricia Doll-Fallstrom Michael E. Donnelly and Karen McFarlane Lizzy Donovan Calista Doran Paula Dorney and Tom South Barbara Dorsey Sharlee Dougherty Cathy Downs Sheri Anne Doyle Bill and Leslie Drake Dennis and Dale Drew Diane Drielsma Matthew and Megan Dunay Ken and Jane Dunbar Betsy Dunklin and Chip Cole Nancy J Dunn Ann Durand Barry and Ellie Dworak Caroline Earley and Kate Walker Curtis and Mardo Eaton Eldon and Phyllis J. Edmundson Arline Eidam Patti-Lou Eisenberger Aaron Elder Kai Elgethun and Beth Mullenbach Deborah Elliott Kathleen Elliott and Teresa Hampton Robert W. Ellis Kathy and Tom Ellison Andrew Emerick Marissa Emmons Beth Ennis Eric Ennis and Ayako Otani Mary Lou Ennis John Epp and Ann Wieck-Epp Dana Erdman Rachel Ericson and Austen Willes Chad Erpelding Andrew and Shannon Erstad Susan Erwin Maria and Thomas Eschen Don and Maria Essig Cosmic Rebecca Evans Josh Evett and Kristy Weyhrich Evett Sunshine Evetts Staci Falconer Martha Farnes Amber and Brent Fawson Jacki and Tim Fearnside Dennis and Heather Feeney Anne and Scott Feighner Randy Feiglstok and Lynne Bachman Linda Feinberg Murray and Nancy Feldman Henry and Valerie Fenske Clark and Sydney Fidler</p>
---	---	--	---	---	--



John Fiedler and Lesley Bahner Cindy Finch and Ken Smith Dan Fink and Janet Kaufman Daralene and John Finnell Matthew Fiorentino Mydell Fisher Susie Fisher Mark and Connie S. Fledderjohann Linda and Lynn Fleming Stephen Fleming and Mami Inoue Linda Flesner Anne Flickinger and Frank Sesek Jack and Sharon Floegel Ginger Floerchinger-Franks Valerie Follett Christi Follmer Alison and Jim Foudy Brian Fox Megan Fox Theresa Fox Charles Francey Elizabeth Franklin Bill Fraser Mary Ann Fraser Shannon and Jan Frazier Rob Freedman and Anne Cirillo Jan Freeman Long and Jeffrey Long Sheri Freemuth Carma Fretwell Kaela Fretwell Peter Fridel Bob Friedman and Gretchen Hecht Virginia Friend Emily Fritchman Fred Fritchman Jeff and Carla Fromm Chris Fuhrman Frances Fujii and Thomas Voccola Pat Fujii Maggie Fullerton and George Thoma Tim and Susan Furness Amanda Gailbreath Katherine Gailbreath Walt and Laurie Gammill Raylene and Richard Garcia Dr. Richard Gardner Marshall and Leslie Garrett Ernie and Jackie Garrison Jacalyn Garrison Doug Gates Sheree Gaughan Renette Gaumer Karl and Joyce Gebhardt Susan Gelletly and Christian Petrich Andrew and Julie Gendler John Gentry Melinda and Thom George Rick and Julie Gerrard Ralph and Mary Getchell Dr. Michael Gibson	Paul and Susan Gibson Tom Gilbertson Thomas and Raylene Gilmore Joe and Kathryn Giordano Michelle and John Girgis Deanna Glad and Mark Caywood Jane Glass and Mark Spitzer Norma Penchansky Glasser Brenda Golden and Charlotte Kilfoyle Kathy Golden Sharon Gooding Mary Ellen Goodwin Tim and Belinda Gordon Krista Gorman Rebecca Leber-Gottberg and David Gottberg Nancy and David Grabarczyk Alexandra Grande and Brady Harrison Joyce Green Elizabeth Greene Douglas Griffin Harriette D Grissom Richard and Ruth Grossa Rob and Becky Grover Gail Guetschow Jaci Guilford Michael Guillen and Michael Hawley Patrizia Guiotto Brett and Jill Gustafson Diana Gutierrez James Guyton and Sharon Westbrook Cyndi Haensli Melissa Hagman and Melinda Gilbert Matthew and Alisha Haight Gail M Haldeman Betsy and Kirk Hall Carolann Hall Gypsy S. Hall Julie Hall and Pete Zimowsky Susan Hall Kathy Halsey Evans and Don Evans Tom and Sam Hamilton Tara Anthes and Christian Hamlat Julie Hansen Terry Hansen Sarah and Carl Hanson George and Bev Harad W.G. and Beth Harbison Ryan and Sabra Hardy Greg Harley and Jan Sutter Ernie and Gale Harper Sharon Harrigfeld Candy Harris David Harris Glenn Harris and Jana Kemp Megan and Kiv Harris Ron and Mary Harris Tom and Sandy Harris Cynthia and Rodney Harrison Penny Harrison Elaine Hartman	Karen Hauser Teresa Hausladen Karen Haven Michael and JoAnne Hawe David H Hawk Gail Hawkins Sharon Hawkins David Hayes and Julie Solberg Harriet I. Hayes Virginia Hayes Tom and Martha Hays Dennis and Betty Hayzlett John C. Hecht Antonia Hedrick Ann Hegstrom Pam Helfrich Helen and Steve Henderson Jo Henderson Michael and Margaret Henderson Agnes Hendrie Sheila Hennessey and Ern Blackwelder Susan Herndon David Hertel and Caren Hosselkus Linda Hicks Ruth and John Hicks Ramona Higer Andrea and Andrew Hill Paula and Leonard Hill Mary Hindson Ben Hipple Jonathan and Vanessa Hirt Julie Hoefnagels Christina Hoffman Pat Hohnhorst Ernest and Carol Hoidal Judith Holcombe Lisa Holley Carol Holsinger Isabel Rae Holt Kathi Holzer Penny Hon Amanda and Sam Hooley Edith Hope Kim Hoppie Matthew and Cassie Horner Kathy Horton Douglas L. Houston and Nancy A. Taylor Sally Howard Ken Howell Matt Howell and Jana LaRosa Mary Claire Huber and Helge Gabert Linda Huffman Melanie Huffman Steve and Annie Humke Springer and Sperry Hunt Chris Huntley and Sara Shepard Brett and Michelle Hurty Joshua Hurwit and Jordan Heller Ted Hutchison Nancy Inaba	Bess Isaacson Michael Ito and Tamara Jahelka-Ito Robert and Linda Jackson Ann James Darcy James Gregory and Lauri Janos Alexa Jardine Martha Jaworski Kelli and Tom Jenkins David and Katherine Jensen Noah Jensen and Katherine Himes Richard Jin Daniel and Carmelyn Johnson Jo Johnson Joan Roberts and Mark Johnson Joyce Johnson Peter and Brenda Johnson Richard Johnson Rochelle Johnson Bruce Jones and Shannon Davis-Jones Connie Jones Elizabeth W. Jones Jim and Kelly Jones Jo Ann Jones Martha Ann Jones Megan Jones Peggy Jones William Jones and Chris Dixon Ken and Pat Jorgensen James F. and Linda Judd Susan Judge Michelle Juhasz Steven and Linda Kahn Mark Kailer and Barbara King Kamal Karda and Ashitaa Chandnani Ruth and Sandy Kassens Maria and Scott Kauffman James Kearney and Devani Scheidler Joseph Keegan Jeri Kehne Catherine Keibler Truman and Jeanne Keith Elizabeth Kelsey Sandra Kemper Patricia Kennedy Dr. Kathleen Keys and Mr. Brian Taylor Albina Khouzina Francis Kilkenny and Sandra Herdt John and Suzanne Kindree Glenda and Howard King Thomas and Carolyn King Mary Lou Kinney Kevin and Virginia Kirk Gail Kirkpatrick Meg Klawiter and Todd Dvorak Gretchen A. Klein Betsy and Brian Klene Leonard and Alberta Klikunas Dorothy and Robert Klomp Barbara Knight	Gregory Knight and Constance Gordon Cheryl Knighton Sandy Kock Kristi Kolln Kathleen Koskella Rudy Kovacs David Kretschmar John Kriz and Carol Cronin Kriz Muriel Kronowitz Paul Kurtz Diane Kushlan Robert and Patricia La Chance Kathleen Marie Lacey Colman Lamb and Denali Minnick Luana Lamkin Ladwina Lancaster Michael Lane and Monica Davenport Peter and Becky Langhus Mileen Langley Alexandria and Gerald Larsen Ricky LaVaughn Annamarie Lavieri and Albert Gunther Shawn Lawson and Michelle Mogollón Sandra Lease and David Hugg Gail LeBow Joe and Maria Lechner Edmund L Leckert III Jenn Lee and Jennifer Pirente Roger and Ruthi Lee Vicky Lee Joni and Dieter Leipf Nicole Leonard and Carol Garrison Jules and Fay Levin Brad and Julia Lewis Les Lewis Patricia Lewis John Lightner Kim Lightner Mohan and Diane Limaye Eric and Nell Lindquist Lee and Joan Lindquist Melinda Lindsey Francie Link Karen Lockhart Sabrina Logosz Henry and Aimee Lohse Helen Lojek David and Judith Lombardi Sally and Bob Long John and Donna Looze David and Miriam Lott Pete and Cyndy Lounsbury Kristin and Todd Lovell Sherri Loya Jim and Jude Lucker Victoria L Luft Kristin Lundstrom Carolyn Lunstrum Marcia Lynn Reggie Mace and Bethany Edwards	Cheryl Mack Marie Macklin Patrick and Cissy Madigan Amy Maguire and Jeffrey Staley Herbert Malany Jennifer and Lance Mallette Betty Mallorca and Lawrence Manning Penelope Manning Bill and Leah March Heidi Marotz Merilee Marsh Georgia Marshall Bill and Edie Martin Frank Martinez and Bonnie Shuster Nikki and Mike Mason Owen Mason Gay-Emily M. Massie Addy Mast Don and Diane Masterson Frank and Joan Mattern Joan Mattox Jack and Deb Matunas Susan Mauk Rich and Betsy McBride Vicki McBride Kay McCabe Gary McCall and Mary Gardiner Marlene McCallum Julie and Drew McCandless Kathleen McCarter Shirley McCarter Luana McCauley Ann McClanahan Allison McClintick Marilyn McCord Sarah McCormack Reilly and Amy McDevitt Sharon McDonald Gwynne McElhinney and Robert McAndrew Matt McFarlane Mary and Charles McGee Jean McGillis JK McGinnis Sherry McGowin Mike McHargue and Colleen McKenzie Steve and Jo McIntyre Martha and Jack McIver Kate McLaughlin Jack and Peggy McMahon Mary Ellen McMurtrie Pam McNamara Mia McNeal Robert and Susan Mejia Joyce B Melchert Lisa and Tim Melchert Mel Melton Scott David Merrill J.D. and Maggie Merris Bobby Mette Molly Mettler
---	---	--	---	---	--



INDIVIDUAL SUPPORT

INDIVIDUAL SUPPORT

Chris and Karen Meyer	Dean and Gale Nehrig	Ann Peterson	Susan Floriana Riley	Sarah Scott and Kenley Hinrichs	Brenda Steidel
Jeffrey and Tamara Meyers	Herb Neitzel	Bradford D. Peterson	Bing Ringert	Celia Scully	Monica Steiner
Amanda Micheletty	Angela Neiwert	Julius E. Peterson	Charlene Ripke	Jan Seda	Paula Stern
Karen Midlo	Carl and Karen Nelson	Karen Peterson	Richard and Martha Ripple	Aaron Seidlitz	Rebecca Stern and Stephen Nold
Susan Mihaylo	Karin Nelson	Polly and Tyler Peterson	Sharon and Harry Risso	Sarah Sessions	Lou Sternberg and Valerie Steffen
Cheryl Miller	Mark Nelson and Julie Collins	Susan Philley	Nancy Rittenger	Kevin Settles and Elizabeth Fraser	Janice Stevenor Dale
Chris Miller	Paul and Margaret Nelson	Deborah G. Phillips	Chad and Laura Ritzer	Catherine Sewell and Jessica Rodriguez	Jedidiah Stewart and Andrew Farnsworth
Helen N Miller	Randy and Melissa Nelson	Terri Pickens and Mark Manweiler	Amanda and Steve Roberts	Katie Shalz	Valerie and Rick Stewart
Amy Miller Yost	Robert and Joanne Nelson	Kathleen Pidjeon	Bron Roberts and Jeremy Gray	Noreen Shanafelt	Kathryn A. Sticklen
Robert P. Minch	Travis and Kathy Nelson	Dianne Pierce	Kristy J Robinson	Jim and Lisa Shane	Terry Stickney and Vicki Marti
Jo Anne Minnick	Laura and Joe Netz	Patty C. Pierose	Reba E Robinson	Katherine Shaughnessy and Tom Michael	John Stieha
Walt and A.K. Minnick	Corliss Neuber	Jason Pintler and Anne Kunkel	Madeleine and Michael Rocklein	Nancy Shaw	Carol Stoehr
Lillian Mistic	David Nevin and Samantha Silva	Elizabeth Pirie	Claire A. Rodkey	Pamela Sheldon	Diann Stone
Dinu Mistry and Jim Wolf	Delos and Mary Ann Newcomer	Gwen Pittam	Rita B. Rodriguez	Barb Shelley	Evan Stone
Stanley and Carolyn Mitchell	Mark Newsom	Ken and Sue Plager	Paul and Nancy Rolig	Diane Shelton	Jana Straubhar
Winston C. Mitchell	Deborah Newton	Susan J. Pohl	Melisa Romero	Cara and Ashby Sherburne	Gwynnith and Michael Strickland
Bruce Moberly and Darlena Taylor	Larry and Josie Newton	Sharon Pond	Clay and Janet Roscoe	Sally Sherman	Ellen G. Suchar
Barbara Mockenhaupt	Kay and John Nice	Sarah and Steven Pontickio	Nolan and Jeanne Rosenbaum	Barbara P. Shinn	Nancy Suiter
John and Linda Mohr	Pam and Richard Niece	Linda and Walt Poole	Cheryl D. Rost	Michael and Gloria Shirley	Larry and Ronna Sundell
Kent and Susan Mommsen	Stephen and Annie Nies	Verna Pooler	Charlotte and Darwin Roy	Edna and Dan Shochat	Alicia Suski and Nathan Hirsch
Jimmy Monack	Kurt Nilsson and Elsa Lee	Steven and Elizabeth Popish	Sue Rubin	Fred Shoemaker	Lorna Sutcliffe and Martin Wolford
Janice Monson	Damon Noller	Dan Popkey	John Rucker and Bonnie Sermon	Jamie Shropshire	Marilyn Sutton
Regina Montenegro	Martha S. Noonan and Erin Fahnstrom	Milica Popovic	Teresa and James Rudolph	Susan Shuff	Rebecca Swartz
Richard and Elizabeth Montgomery	Nancy Norton	Nate Poppino	Serena Ruggieri	Wendy and Ryan Sigler	Kelle and Seann Sweeney
James Moorcroft	Vera Noyce	Stephen and Catherine Poppino	James and Carolyn Russ	Kerri Silvernell	Shirley Sweeney
Arlinda Moore	Joe and Audrey Numbers	Karen and Andrew Porth	Lincea Ruth	Hal and Susie Simmons	Nora Sweeney-Schnoor and Chris Schnoor
Bryan Moore	Nancy Oakes	Lisa and John Potter	Carol and Joseph Rutte	Linda and Ralph Simmons	Jonathan and Vicky Swerdloff
Debra Moore	Linda O'Connor	Ron Prado	Lari B Ryan	Jill Simplot	John F Swift
Mary E. Moore	Mark and Heidi Oden	George Prentice	Pam Rybus	Steven and Mary Simpson	Calvin R. and Macey P. Swinson
Matt and Anne Moore	Richard and Gerrie Oehlschlager	Dan and Jana Price	Margaret Sabin	Susan Simpson	Colleen Taggart
Greg and Aimee Moran	Dwaine and Judy Ogden	Toni Price	Jose Saenz	Betty Sims	Lori and Richard Talboy
Joy Morris	Molly O'Leary	Mark and Betty Purdy	Maria M. Salazar	Ethan Sims and Nicole Klein	Mark Tanen
Dan Morrow	Jeff Oliver and Jennifer Lynn	Kris Query	Teresa L. Sales	Flora Skillern	Claire Tardiff
Anthony Morse	Jane Oliveri	Suzanne Radeke	Ann Samuelson	Sandra Small	Neil Tarrant and Anna De Felice
George and Sharon Moses	Susan Olson	Dagmar Rapp	Cynthia Samuelson	Bob and Marilyn Smith	John Taye
Tim Mosko and Jane DeChambeau	Sue Omel and Steve Randolph	John Ratterree	Kristine Sanda	Donita K. Smith	Joyce Taylor
Mary Mosley	Kate O'Neill	Lorelle Rau	Keith D. and Lynn A. Sander	Michael and Susan Smith	Kay and Rich Taylor
Bill and Gail Mott	Sharron and Richard O'Neil	Kathryn and Daniel Rave	Sandy Santa Cruz	Richard and Gwen Smith	Rachel Teannalach
Bernie and Tim Mueller	Beth and Jonathan Oppenheimer	Dorothy Read	Signe Sather-Blair and Chuck Blair	Wally Smith and Mary Clagett Smith	Jennifer Teater and Martin Rebensteiger
Doug and Karen Mulberry	Hugh and Kaye O'Riordan	Catherine Reckmeyer	Kristi Sather-Smith	Dean W Snapp	Pete and Carolyn Templeton
Susan Mulkey	Richard and Sandra Ostrogorsky	Charles and Mary Reed	Gary Sauriol and Helen Law	Cliff H. and Kay C. Snider	Holly Terndrup
Victoria Mundy	Tom and Donna Oswald	Linda Reed	Polly Savage Grimp	Sam Snider	Janie and Rick Thamer
Jon and Gina Munkers	Grace W Owens	Sara and Robert Regalia	Adam Saxler and Olga Mass	Caroline Snyder Blakeslee	Justin and Jane Tharpe
Laurie Munn	Richard T Owens	Nathan Reider	Ana Maria Schachtell	Janet Sobieski	Pamela Thibeau
Shirley Murata	Rachel Padget and Stephen Kriss	Marjorie Reinecker	Chuck and Pam Scheer	Caroline Sobota	Brian Thom and Ardele Hanson
Ann Murdoch	Bonnie Paisley and William Scott	Susan Reinhard	Roy and Sue Schiele	Marianne Solberg	Lavea and Wade Thomas
Brian and Terri Murphy	Suzanne Paisley and Charles Jones	Andrea and Paul Remeis	Norm and Lisa Schlachter	Jase Souder	Margaret A. Thomas
David H. and Linda Mary Murphy	Claudia Parcels	Claire Remsberg	Janet Schlicht	Dinah Sours	Peter Thometz
Kathy Murphy	Laurie Parker	Mike Reuling and Marianne McIntosh	Larry and Deanna Schmidt	Agnes Sowle	Cheryl and Craig Thompson
Rachel and Thomas Murphy	Sharon Parks	John Reyna	Ken Schneider and Lisa Allen Schneider	Caile Spear and Glen Walker	Abigail Thomson and John Sinsky
Vicki Murphy	Carrie Parrish	Janie Reynolds	Lorraine Schneider	Faye Spencer	Eric and Sara Thomson
Matt Murray and Lisa Wilson	Cherie Pasley Clayton and Jim Clayton	Jodi Reynolds and Ron Reinhart	Connie and Jerry Schroeder	Nicole Speulda Clouser and Kevin Clouser	Virginia Thornley
Shaun and Scott Muscolo	John and Rebecca Pearson	Cynthia Richards	Kathleen F Schubin	Jean Spinazola	Brook Thornton
JoAnn Musholt	Nan Pelletier	Vana Richards	Eric and Julie Schulz	Sheryl Spinden	Carolyn U Thornton
Dave and Diane Myklegard	Alise and Seth Pemsler	Betsie Richardson	Jerry R. Schwartz	Lynn Sprague	Katharine Tibbitts
Nissa and Robert Nagel	Carol Perkins	Josephine Richstad and Christopher Sanchez	Sallie Schwartzkopf	David Spurling and Maggie Frole Spurling	Rob Tiedemann and Anne Orzepowski
Patty Nakaoki and Gary Trakas	Sheryl Perry	Linda and Dan Rickard	Barb Scott	Jessica and Steve St. Thomas	Rick and Mary Toews
Thomas Neale and Eileen Oldag	Kevin Peter and Lorraine Gross	Jennifer Riebe	Dan Scott and Art Dodson	Judy and Amy Stack	Tom and Jill Tompkins
Jill Nebeker	Dr. and Mrs. David Peterman	Jan and Ronald Riley	David Scott	Judith Steele	Mary Tormey and Paul Hutcheson
Jeffrey Nee and Stephanie Telesco	Janet Petersen and Alexis Wyatt Petersen	Linda Riley	David and Kathy Scott	Peter and Heather Stegner	Martin and Jane Torres



INDIVIDUAL SUPPORT

INDIVIDUAL SUPPORT

Theresa Toward
Mary Trail
Mark and Annabelle Travis
Annie and Mike Treinen
Tom and Kathleen Trotter
Steve Trout and Sally Stevens
David and Barbara Turner
Lee Ann Turner
Patt Turner
Larry and Terri Turpin
Janet and Roy Tweedle
Molly Uberuaga and Bill Dokken
Teresa Uberuaga
Debra and Frank Urizar
Gayle Valentine and Keith Kiler
Nancy Van Dinter
Lois Van Doren
Randy and Teri Van Dyck
Rosemarie Van Pembroke
Shirley Van Zandt
Velma J. Vance
Rena Vandewater
Jena and Bill Vasconcellos
Veronika Vazhnik
Anne P. Veigel and Greg Patterson
Judith Vest
Bonita Vestal
Robert E. Vestal and Jyl K. Hoyt
Steve and Jackie Vickers
Raelene Viste
Thomas Von Alten and Jeanette Ross
Mike Wagner
Scott and Catherine Wagner
Bill and Jan Waite
Joseph C. Wakefield
Jeff and Linda Walker

Patricia Walker
Keith Walklet and Annette Bottaro-Walklet
Stanley and Ilene Wallace
Dawn Walsh
Cindi Walton
John Warfel and Amanda Hammond
Tarmo Watia
Elaine Watson
Mike Weiss and Catherine Emard
Paula and Ken Weitemier
Janice Welgan
Rachel Welker and Shawn Conroy
Mark D. Wells
James and Stephanie Wernitz
Tom and Denise West
Linda and David Westrick
Chris and John Westwater
Christopher Wettstein
Gregg and Marje Wharry
Joseph M. Wheat and Robert Vasquez
Jenna Whitlock
Linda Whittig
Ada Marie Whitworth
Linda Wiemann
Matt and Nancy Wilkening
Christina Wilkens
Thomas Wilkerson
William Wilkinson and Sarah Googe
Mike Willett
Don and Debbie Williams
Jennifer Williams
Jenny Williams
Melisa and Jeff Williams
Brandy and Eric Wilson
Brooks and Mallory Wilson
Gwen and John Wilson

Laura Wilson
Marjorie Wilson and Brady Wilson
Richard Wilson
Suzie Wilson
Tobi and Lauren Wilson
Ann Winslow
Stephanie Winters-Falk
John Witte
Michael and Judy Wojcicki
Michelle Wolfe
Janet and Curtis Wonacott
Daniel Wong and Judy Rae Wong
Barbara Wood
Carol L. Wood
Jeri Wood and Daniel Herrig
Margaret Wood
Spencer and Layle Wood
Scott Woodbury and Michele Tae
Cynthia and Dillon Woods
Gayle Woods
Karen Woods
Michael and Diane Wyett
Abby Wyler
Mark and Delinda Wynn
Craig Yates
David C. Yearsley
Ax and Jennifer Yewer
Richard Young
Stephanie Youngerman and Robert Jahn
Xiangmiao Yuan
Christine Zimowsky
A.J. Zissler
Hattie and Mike Zobott
Yvette Zoe
Jean Zorr-Uebelacker
Anonymous



▲ *The World Stage: Contemporary Art from the Collections of Jordan D. Schnitzer and His Family Foundation, Boise Art Museum installation detail, 2021.*

BAM's 1937 Circle

The *1937 Circle* recognizes those who have chosen to support the Boise Art Museum through their wills, estate plans, life income arrangements, and major planned gifts. Contributions received as a result of charitable planning help build for the future by supporting the programs and activities of the Museum in perpetuity.

- Bill and Marti Agler
- Tom and Marilyn Beck
- Lee and Nancy Bondurant*
- Terry and Julia Bowman
- Wilfred Davis Fletcher*
- Kay Hardy and Gregory Kaslo
- Besse La Budde*
- Jeffrey L. Long and Jan Freeman Long
- Mary Lou Orndorff*
- Elke Pont Scholl
- Bill and Virginia Woolley

* realized gift

Donations in Honor and in Memory

(May 1, 2021 – April 30, 2022)

In Memory of Alice Anderson
Armando A. Costales and Wendy E. Payton

In Honor of Alice Hennessey
Andrew and Shannon Erstad

In Honor of Woodina Livingston
Anonymous

In Memory of Ruth Ness
Alexa Jardine

In Memory of Peter O'Neill
Douglas and Meredith Carnahan

In Memory of Bob Richards
Alice Hennessey

In Memory of Sally Richards
Helga and Philip Fast
Lynnda Hicks

In Memory of Bob and Sally Richards
Arthur F. (Skip) and Esther Oppenheimer

In Memory of Tom Ripke
Annie Chalfant
Irv and Trudy Littman

In Honor of Carl Rustad
Richard Jin

In Memory of Eleanor Sandmeier Serviss
Mark and Rebecca Hoffmann



▲ Visitors experiencing the exhibition *Suchitra Mattai: Breathing Room*.



GRANTS, SPONSORSHIPS & CORPORATE CONTRIBUTIONS

This list reflects funds received from May 1, 2021 – April 30, 2022.
Support is acknowledged within the following giving categories.

Classical Circle (\$50,000 - \$99,999)
Institute of Museum and Library Services

Impressionist Circle (\$25,000 - \$49,999)
Art Bridges

Expressionist Circle (\$5,000 - \$24,999)
Bank of America, Museums on Us
Blue Cross of Idaho
Erstad Architects
The Hardy Foundation
Idaho Central Credit Union
Idaho Commission on the Arts
Idaho Community Foundation
Idaho Humanities Council
Idaho Women's Charitable Foundation
Inland Toyota Dealers Association
J.R. Simplot Company Foundation
Julius C. Jeker Foundation
National Endowment for the Arts
Pella Windows & Doors Mountain West
Pettitt Group Real Estate at Group One Sotheby's
Union Pacific Foundation
Willamette Dental Group

Romanticist Circle (\$1,000 - \$4,999)
CapEd Credit Union
Charles Redd Center for Western Studies
Cirillo/Freedman Family Fund/Fidelity Charitable Gift Fund
Craig Stein Beverage
Eggertsen Family Fund of the Bank of America Charitable Gift Fund
The Four J Foundation
Friesen Gallery, Sun Valley
Idaho Power Company
John B. and Dolores L. Fery Fund/Idaho Community Foundation
LeafFilter Gutter Protection
Mobile Cash Services
National Endowment for the Humanities



▲ A member of BAM's Inclusive Design Advisory Group enjoys a pilot tour of the affordances in the *Many Wests* exhibition developed for people with low or no vision.

Renewal By Andersen of Boise
TitleOne Corporation
US Bank
Anonymous

Modernist Circle (\$150 - \$999)
Bob and Sherrie Barney Fund/Fidelity Charitable Gift Fund
Fred Meyer Community Rewards
Hawley Troxell Ennis & Hawley LLP
Irv and Trudy Littman Philanthropic Gift Fund/
Idaho Community Foundation
Jennifer M. Dickey and Andrew J. Huang Fund/
Schwab Charitable Fund
John and Nancy Werdel Fund/Schwab Charitable Fund
Law/Alternatives/PLLC
Liebich Family Fund/Fidelity Charitable Gift Fund
McFarlane Giving Fund/Fidelity Charitable Gift Fund

Up to \$150
AmazonSmile Foundation
AmerisourceBergen Foundation
Intel Foundation
One4All Charitable Fund
Treinen Family Charitable Giving Fund/
Knights of Columbus Charitable Fund
Anonymous

Great Art Museums Have Great Business Partners

Businesses that contribute \$1,000 or more to the Museum are acknowledged in BAM's *Corporate Circle*.
Boise Art Museum's business partners are deeply invested in preserving and improving the quality of life for people in our communities. The Museum gratefully recognizes their critical support.

This list reflects funds received from May 1, 2021 – April 30, 2022.
Support is acknowledged within BAM's *Corporate Circle* giving levels.

Major Sponsors (\$10,000 - \$24,999)

Toyota
Willamette Dental

Core Sponsors (\$1,000 - \$9,999)

Bank of America
Blue Cross of Idaho
CapEd Credit Union
Craig Stein Beverage (CSB)
Erstad Architects
Friesen Gallery, Sun Valley
Idaho Central Credit Union
LeafFilter Gutter Protection
Mobile Cash Services
Pella Windows & Doors
Pettitt Group Real Estate at Group One
Sotheby's International Realty
Renewal by Andersen of Boise
TitleOne Corporation
US Bank

In-Kind Sponsors

94.9 The River
Ballet Idaho
Boise State Public Radio
Boise Towne Square
Dawson Taylor Coffee Roasters
Injury Care EMS



▲ Visitors enjoy chair yoga in the Sculpture Court in conjunction with BAM's *Especially for Seniors* day.



▲ *Everyday Objects: The Enduring Appeal of Still Life*, Boise Art Museum installation detail, 2022.

BOARD OF TRUSTEES 2021-22

EXECUTIVE COMMITTEE

Amy Rustad	<i>President</i>
Cheryl Thompson	<i>President-Elect</i>
Laurie Ryan	<i>Past President</i>
Jim Brandstetter	<i>Treasurer</i>
Cathy Silak	<i>Secretary</i>
Melanie Fales	<i>Executive Director/CEO</i>

TRUSTEES

Elise Alford	Yvonne McCoy
Angela Baylis	Mikel Ward
Ridgley Denning	Chad Weltzin
Tom Foerstel	



▲ *Many Wests: Artists Shape an American Idea*, Boise Art Museum installation detail, 2021.

MUSEUM PROFESSIONAL STAFF 2021-22

Melanie Fales, Executive Director / CEO

Administration

Veronica Martinez, Administrative / Membership Assistant
Caren Massari, Financial Manager
Hana Van Huffel, Marketing / Creative Services Coordinator

Advancement

Laura Simic, Interim Development Manager
Andrea Burke, Event Coordinator
Rebecca Mulberry, Membership Coordinator

Collections, Exhibitions, Education

Skye Bassett, Registrar
Kelly Cook, Curator of Education
Lianna Hamby, Program Assistant
Todd Newman, Facilities Manager / Preparator
Mary Pence, ArtReach Instructor

Museum Store

Kaitlyn Bellamy, Sales and Admission Assistant
Mark Campbell, Sales and Admission Assistant
Sam Criner, Sales and Admission Assistant

Visitor Services Associates

Seth Baringer
Kelsey Carrington
Maggie Cornell
Qurnain Rao

Emeritus

Sandy Harthorn, Curator Emeritus

BAM | BOISE ART MUSEUM

Designed and Edited by: Boise Art Museum Staff

Visit us online and view this annual report at www.boiseartmuseum.org

Cover Images (L-R, Top-Bottom): Visitors experience the exhibition *Suchitra Mattai: Breathing Room* on display at BAM. Angel Rodríguez-Díaz, *The Protagonist of an Endless Story*, 1993, oil on canvas, Smithsonian American Art Museum, Museum purchase made possible in part by the Smithsonian Latino Initiatives Pool and the Smithsonian Institution Collections Acquisition Program, 1996.19. © 1993, Angel Rodríguez-Díaz. *Everyday Objects: The Enduring Appeal of Still Life*, Boise Art Museum installation detail, 2022. Students create art in their classroom using BAM's new ArtReach Remote Learning application. Visitors make mindful creations on BAM's Buddha Board wall. Felix Gonzalez-Torres, *"Untitled" (L.A.)*, 1991, green candies in clear wrappers, endless supply, overall dimensions vary with installation, original weight: 50 lb., jointly owned by Art Bridges and Crystal Bridges Museum of American Art, on loan from Art Bridges. © Felix Gonzalez-Torres, courtesy of the Felix Gonzalez-Torres Foundation. Armando Marino, *Untitled (Couch with legs/feet)*, from the "Herencia Colonial" Series, 2003, watercolor on paper, 40 x 60 inches, Collection of the Jordan Schnitzer Museum of Art, Gift of Linda and Irwin Berman, in memory of Linda.

Boise Art Museum is a 501(c)(3) non-profit, educational, and charitable organization. The Museum is nationally accredited by the American Alliance of Museums. Support is provided by BAM members, contributions and grants from individuals, corporations and foundations, as well as grant funding from the Idaho Commission on the Arts and the National Endowment for the Arts.

